

Pasadena Unified School District Facilities Master Plan Community Presentations



September 10, 2008

AGENDA

- **Introduction - Superintendent Edwin Diaz**
- **Mission - Superintendent**
- **The Process and Community Involvement; The FMP Committee – Chief of Staff Steve Brinkman**
- **Project Prioritization – Chief of Staff**
- **Site Facilities Planning / Project Lists – gkkworks**
- **Revenue Assumptions – Chief of Staff**
- **Next Steps – Chief of Staff**

What is a Facilities Master Plan?

- In **March 2008** the Board commissioned a formal facilities master plan process to build on and **complete the work started with Bunton Clifford Associates (“BCA”)**. A Statement of Qualifications process was undertaken and the **firm of gkkworks** (the “Firm”), with an office in Pasadena and extensive experience in facilities master planning, **was hired** on March 25, 2008 to assist in the development of a *comprehensive* Facilities Master Plan. This Plan not only identifies needs, but is also intended to do the following, which identifies it as **a true planning process**:
 - Develop guidelines and plans for equity among campuses
 - Develop a Master Plan for each campus to promote optimum site utilization and form the basis for later conceptual and detailed architectural plans
 - Provide input to the Board on the tough decisions around grade configuration, and asset management
 - Identify and quantify revenue sources
 - Identify public and joint use opportunities and encourage Board policy decisions related to public use and joint use of facilities
 - Encourage and transmit community input into the process
 - Develop project cost estimates
 - Prioritize projects and timing
 - Provide a plan for ongoing accountability
- ❖ **This Plan is the culmination of an 18 month process and is intended to be a “living” document subject to frequent review and revision as new information or needs arise.**

Facilities Master Plan Goal

The overall goal of this Facilities Master Plan is **EQUITY**:

providing each student with equitable access to a high quality education no matter which school he or she attends

Mission Statement

Recognizing PUSD as the largest landholder in the Pasadena area with the express obligation to use education facilities to educate local children, the "Mission" of the Facilities Master Plan is to provide:

- 1) Effective use of all District land, facilities and designated funding to correlate with and support District education programs, site capacities and enrollment;
- 2) Comprehensive, bricks-and-mortar planning for ongoing deferred maintenance, renovation and upgrading of all facilities;
- 3) Procedures for community access to District facilities compatible with priority use by PUSD students enrolled in District programs.

The Origin of the Plan

- **“Quick Wins” projects of 2007**
- **The Bunton Clifford Associates (“BCA”) Needs Assessments of 2007**
- **The Formal Facilities Master Plan process was approved by the Board of Education in March 2008 (gkkworks architects hired to facilitate planning) with the first comprehensive Facilities Master Plan to be complete 10-01-08 – A “Living” document; the process never stops**
- **Facilities Master Plan Committee was established in April 2008 and meets most Fridays for at least two hours**

Timeline/Deliverables

DATE	DELIVERABLE	RESPONSIBILITY
April 2008	Develop a process for stakeholder input by establishing a working committee	District
Apr-May 2008	Prepare Site Utilization Plans	Architect/District
July 2008	Draft cost estimate	Architect/District
July 2008	Draft Facilities Master Plan	Architect/District
August 2008	Draft Asset Management Studies	Architect/District
Apr-Sep 2008	Community Outreach	District/Architect
October 2008	Final Facilities Master Plan	District/Architect

The Process

➤ Four sources of site assessments:

- ❑ The BCA Needs Assessments of 2007*
- ❑ The gkkworks Facilities Planning Assessments of 2008
- ❑ Site Administrators Assessments
- ❑ PUSD Maintenance and Operations Assessments of 2008

*BCA Priorities – Foundation for Future Assessments

Priority 1: Code, Health, Safety

Priority 2: Infrastructure – Building Shell Integrity, Site Utilities

Priority 3: Program Scope – Classroom Renovations, New Construction Program support, Classroom and kinder reconstruction/replacement, gymnasiums, Career Technical Education, technology, fields

Priority 4: Miscellaneous Modernizations - Support facilities, outdoor spaces, general facilities improvements

Total Estimated Cost Range

\$455 - \$625 Million

Makeup of Facilities Master Plan Committee

- 1 Member of the Citizens Oversight Committee**
- 1 Elementary principal**
- 1 Middle school principal**
- 1 High school principal**
- 4 Citizens at large – One minimum from each of the three PUSD communities**
- 1 City Representative**
- 3 Board members now members of the Facilities and Capital Subcommittee**

District Staff:

Director of Facilities

Chief of Staff

Ex officio - Superintendent

➤ Open meeting process observed

Project Prioritization

- The process of project prioritization was undertaken through an initial lens of the four categories expressed earlier: Code, Health, Safety; Infrastructure; Program Scope; and Miscellaneous Modernizations. All projects were categorized into one of the four categories and then a cost estimate was performed. The Firm was charged with clearly identifying those projects which were absolutely necessary to conform to the Code, Health, and Safety priority based on DSA/ADA requirements. The Committee was asked to prioritize the projects for the other categories with an eye toward future projects which might result from Board decisions on grade configuration resulting from the options presented by the Committee to the Board at its August 19 Board Study session. The Committee spent three meetings prioritizing projects by site and District-wide.

Several other methods of prioritization as to timing were also identified:

- Those campuses which did not get appreciable monies from the last capital plan or with projects not undertaken or completed in the last plan
- District-wide categories – addressed on the following page

District-Wide Projects

- In addition to the project lists by site there are projects that will be addressed District-wide that fall in the following categories that will not appear on the individual site project lists and need to be considered when one reviews the projects to be undertaken as part of a Facilities Master Plan. The categories are listed below;
- Energy and water savings projects including window replacements and lighting upgrades
- Technology projects including computers
- Career Technical Education projects
- Deferred Maintenance projects
- Remove/replace, if applicable, Portables over 20 years of age
- Painting and exterior appearance upgrades
- Seismic upgrades

SITE NEEDS ASSESSMENT



ELEMENTARY SCHOOL

MIDDLE SCHOOL

HIGH SCHOOL

CHARTER SCHOOL

CHILDREN CENTER

School Site: Eliot MS Enrollment: 961
Staff: 45

Date Built: 1931

Site 12.10 acres

School Needs Categories	Needs Reported by BCA Architects	Additional Needs Reported by the site / PUSD M & O	Needs Reported by gkkworks
1. SAFETY, HEALTH, CODE			
1.1 Structural Requirements, Seismic Stability			
1.1.1 Primary Structure	Buildings category type-I and type-II Require detailed seismic evaluation.		Primary structure has attractive architectural features and proportions with great potential towards historical landmark status. Together with its landscaping, this school has high curb appeal on Lake Ave. This appeal should be extended to other exterior areas within the campus.
1.1.2 Ceilings	Upgrade seismic and equipment anchorage.		
1.1.3 Cabinets, Equipment			
1.1.4 Portables			
1.2 Fire / Life Safety			
1.2.1 Corridor, Separation Walls			
1.2.2 Exits (Locations, Widths)			
1.2.3 Fire Dep. Access			
1.3 HVAC / Plumbing / Electrical			
1.3.1 Fire Alarm Systems		M & O: All fan coils in Auditorium need to be hooked up to the EMS controllers.	
1.3.2 Ventilation		Central HVAC system is in very bad shape, it doesn't work.	Repair and balance HVAC system.
1.3.3 HVAC Energy Conservation			
1.3.4 Electrical Energy Conservation			
1.3.5 Toilet Fixture Count			
1.3.6 Other			
1.4 Hazardous Materials / Pest Control			
1.4.1 Asbestos Mitigation			
1.4.2 Lead Paint Mitigation		Paint on exterior windows and frames is scaling off or chipping.	Consider conducting lead Haz-Mat research. Remove old paint and

MODEL SCHOOL STUDY

ELEMENTARY SCHOOL K-5

ENROLLMENT RANGE	:	400 – 700
LOADING	:	K -3-20/CR, 25-32/CR
WALKING DISTANCE	:	1.5-MILE RADIUS

I. Instructional Facilities:

1. Pre-kindergarten (1,350 SF)
2. Kindergarten (1,350 SF)
Double and Single Sessions
3. Classroom (960 SF)
Full size classroom for all grades
Small group areas - Teacher's workrooms / Storage
4. Special Education:
Resource Specialist (RSP 720 SF. – or 1 CR)
Speech and Language classroom (250 SF. - or ½ CR)
Special Day Class (SDC)
School psychologist

II. Library / Media Center: (2.9 SF / Student)

Reading Room, Storyteller, Workroom, Stacks, Prep Room, A.V. Storage, automated library and textbook system, computer search stations with Internet access – Broadcast Center, LCD projection system

III. Administration (3.7 SF / Student)

Secretarial core, Public and Student Waiting, Principal's Office / Toilet, Nurse (desk and record cabinet) / Toilet, Cot room (2), Administration Workroom, Supply Room, Faculty Workroom, Mailroom, Conference Room, Staff Toilets, conference room
Parent / Community Room
Curriculum resource teacher/literacy coach - include office space in
Health services partners (counseling/mental health)

MODEL SCHOOL STUDY

MIDDLE SCHOOL 6 – 8

ENROLLMENT RANGE	:	700 – 1000
LOADING	:	27-32 / CR
WALKING DISTANCE	:	3.0-MILE RADIUS

I. Instructional Facilities:

1. Classrooms (960 SF): Small group areas - Teacher's workrooms / Storage
2. Art Classrooms:
Arts and Crafts (1,600 SF/each)
One (1) ceramic / kiln (1,350 SF)
Prep / Storage / Teacher's Workroom (600 SF)
3. Lab Classrooms:
Science Labs (1,200 SF/each) with Prep Room
Computer Labs (1,200 SF each)
(Class for Typing / Keyboard)
Teacher's Workroom (400 SF)
4. Multi-Media:
T.V./Radio Studio (960 SF)
Teacher's Workroom (100 SF)
5. Music:
Instrumental/Band (2,400 SF Built in risers)
Choral (1,300 SF)
6. Special Education:
Resource Specialist (RSP 720 SF – or 1 CR)
Speech and Language classroom (250 SF - or ½ CR)
Special Day Class (SDC)

II. Library / Media Center: (4 SF / Student)

Reading Room, Stacks, Reference Area, Charging Area, Media Production, Office, Workroom, Quiet Study, A.V. Storage large enough for textbooks, automated library and textbook system, computer search stations with Internet access, Broadcast Center, LCD projection system

III. Administration (3.3 SF / Student)

Program:

Secretarial core, Public and Student Waiting, Principal's Office / Toilet, Vice-Principal's Office, Psychologist/Counseling, Nurse (desk, records cabinet) / Toilet, Cot Room (2),

gkworks

MODEL SCHOOL STUDY

HIGH SCHOOL 9 – 12

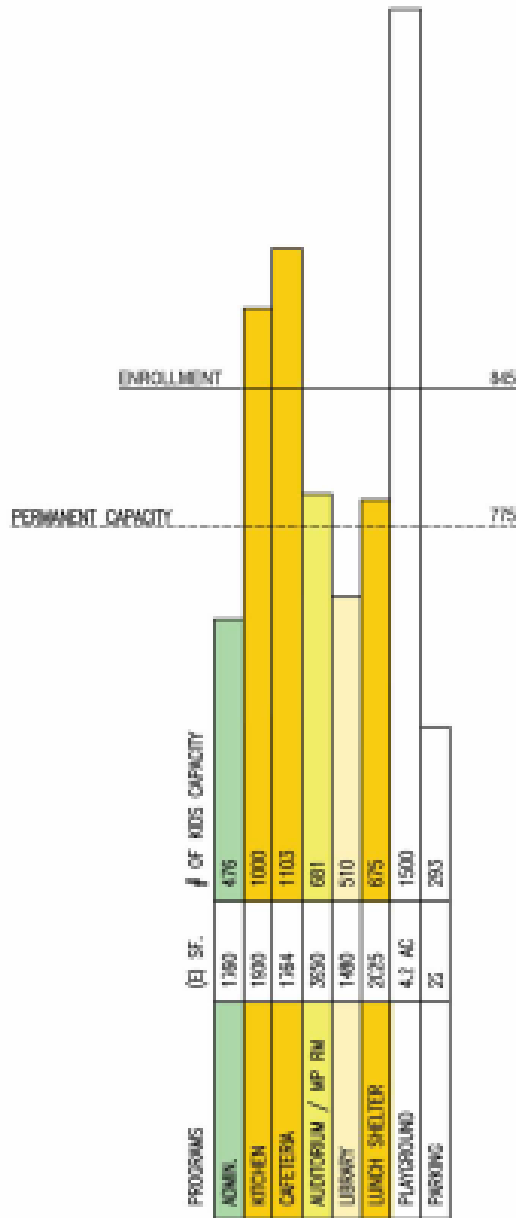
ENROLLMENT RANGE	:	1,500 – 2,000
LOADING	:	27- 32 / CR
WALKING DISTANCE	:	3.0-MILE RADIUS

I. Instructional Facilities:

1. General Classrooms (960 SF/each):
Small group areas - Teacher's workrooms / Storage
2. Art Classrooms:
Arts / Crafts / Ceramics (1,500 SF each)
Photography / Video (2,200 SF)
Drafting / Graphic / Drafting Computer Lab (1,500 SF)
Teacher's Workroom (400 SF)
3. Industrial Arts:
Auto Shop (8,000 SF)
General Shop: Wood/Metal (3,000 SF)
Teachers Workroom (400 SF)
4. Science Labs:
General Science Labs (1,440 SF each)
Prep/Storage/Computer (200 SF)
Biology Lab (1,440 SF)
Chemistry Lab (1,440 SF)
Prep/Storage (200 SF)
3. Computer / Business:
Computer Labs (1,200 SF each)
Vocational / Business Lab (1,200 SF)
Storage (200 SF)
6. Homemaking Classrooms:
Food Prep (2,000 SF)
All Purpose (2,000 SF)
Workroom (250 SF)
7. Foreign Language Lab (960 SF)
8. Performing Arts (Auditorium):
Instrumental / Band (3,500 SF)
Practice rooms, office
Choral (1,300 SF)
Practice room, office
Theater / Stage (600 to 900 seats)
9. Agriculture (1,500 SF)
Classroom, Lab, Greenhouse, Animal Shelter

gkworks

SITE UTILIZATION ASSESSMENT



SCHOOL FACILITY LEGEND



PORTABLE



REASSIGNED TEACHING SPACE

TEACHING SPACES

1

CLASSROOM

2

KINDERGARTEN

3

LAB

4

SHARED ED

5

PE

SHARED SUPPORT

6

LIBRARY

7

MULTI-PURPOSE

8

FOOD SERVICE

9

TOILET

10

WORKROOM, ETC.

CENTRAL ADMINISTRATION

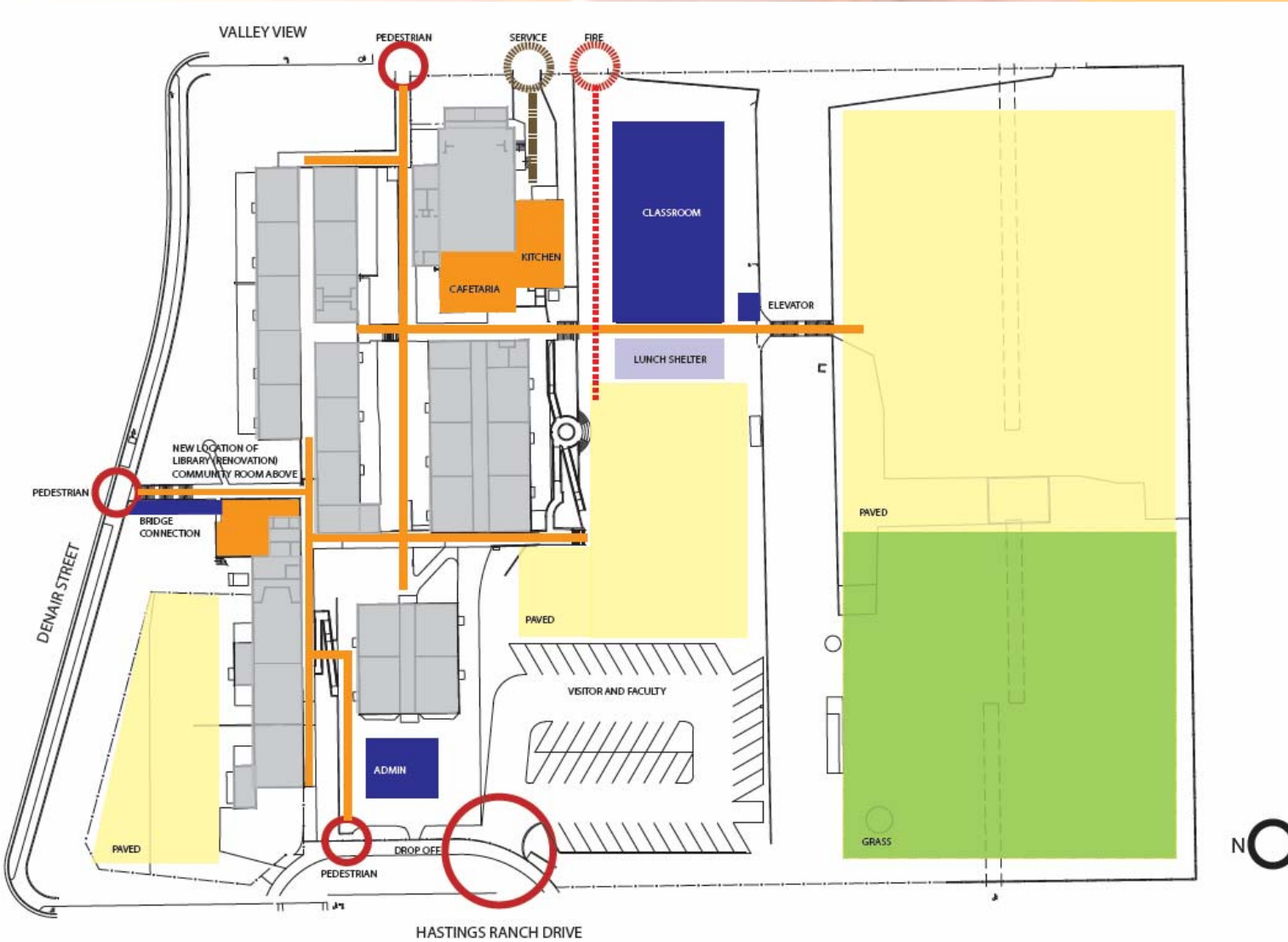
11

CENTRAL ADMIN.

12

MAINTAIN & OPERATION

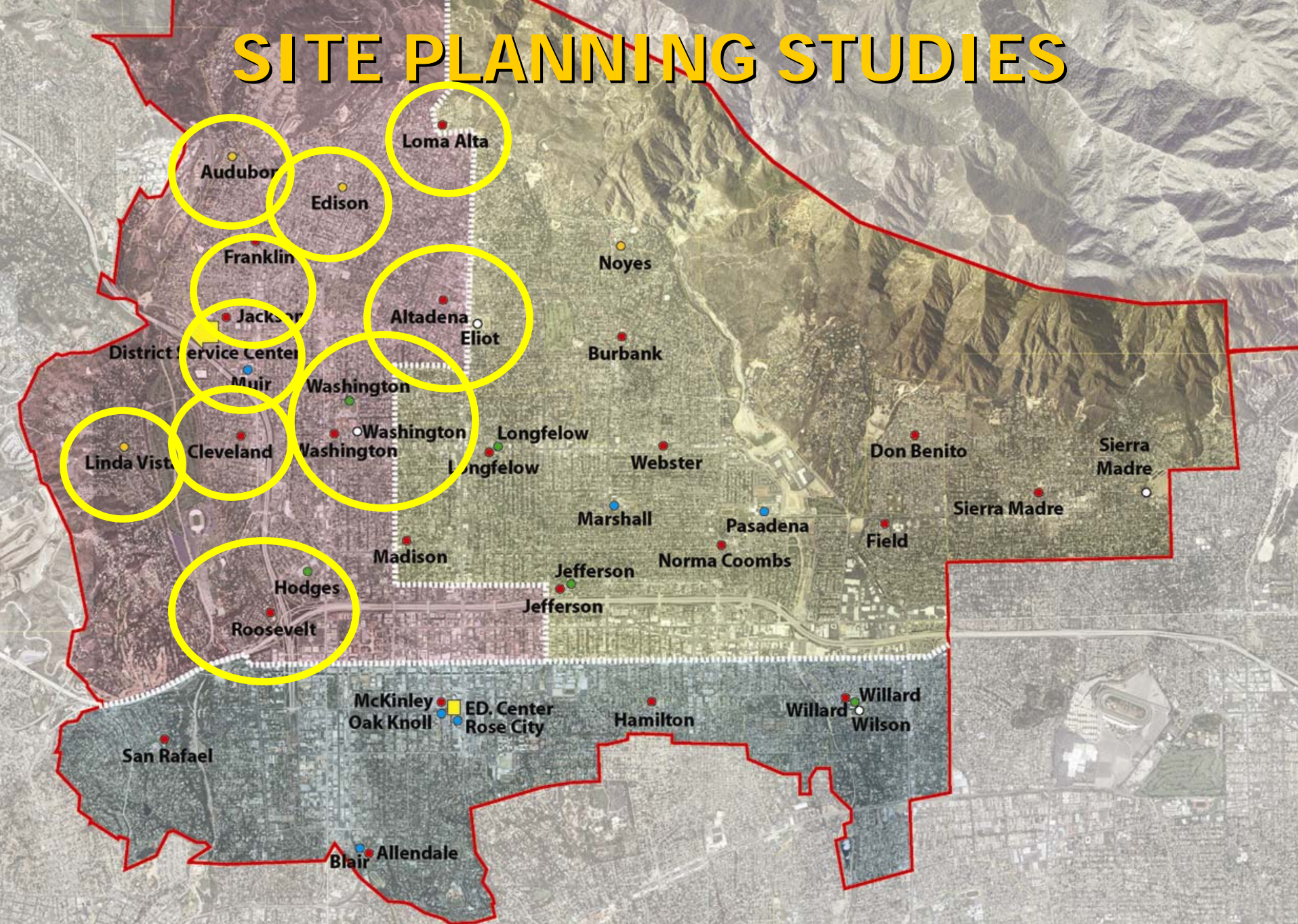
SITE CIRCULATION STUDY



NEW BUILDINGS ■ MODERNIZATION ■ EXISTING ■

gkkworks

SITE PLANNING STUDIES



ELEMENTARY SCHOOL	MIDDLE SCHOOL	HIGH SCHOOL	CHARTER SCHOOL	CHILDREN CENTER
-------------------	---------------	-------------	----------------	-----------------

Altadena Elementary School

743 East Calaveras, Altadena, CA 91001



Principal:	Gregory White
Year Built:	1903
Grade Levels:	Preschool, Kindergarten though 5 th Grade
Enrollment:	Current: 358 Projected: To Be Determined
Current Capacity:	25 Permanent Classrooms 4 Modular Classrooms
School History:	With the original campus built near the turn of the Century, Altadena Elementary includes both buildings of a Historic nature as well as buildings constructed as part of the Measure Y program.
Recent Projects:	Measure Y, Phase 1, Quick Start projects Budget \$6.1M, Completed 2002
School Program:	The school mission is to “develop caring, responsible citizens who embrace diversity.” A thinking, meaning centered curriculum is emphasized. Unique programs to the school are include a structured English immersion program, Gifted and Talented Education, State sponsored Preschool and Special Ed.

gkworks



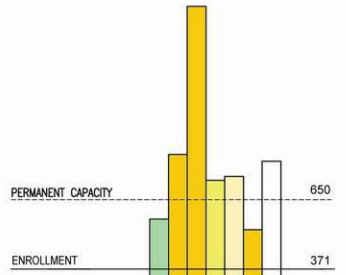
SITE SIZE (ACRES) : 5.00

SCHOOL FACILITY LEGEND

- PORTABLE
- REASSIGNED TEACHING SPACE
- TEACHING SPACES**
 - 1 CLASSROOM
 - 2 KINDERGARTEN
 - 3 LAB
 - 4 SHARED ED
 - 5 PE
- SHARED SUPPORT**
 - 6 LIBRARY
 - 7 MULTI-PURPOSE
 - 8 FOOD SERVICE
 - 9 TOILET
 - 10 WORKROOM, ETC.
- CENTRAL ADMIN.**
 - 11 CENTRAL ADMIN.
 - 12 MAINTAIN & OPERATION



ENROLLMENT AND CAPACITY INFORMATION



PROGRAMS	(E) SF.	# OF KIDS CAPACITY
ADMIN	2750	550
KITCHEN	1370	721
CAFETERIA	1784	1115
AUDITORIUM / MP RM	3795	654
LIBRARY	1920	662
LUNCH SHELTER	1560	520
PLAYGROUND	1.6 AC	706
PARKING	5	167





SITE SIZE (ACRES): 5.00



AERIAL PHOTO

MODERNIZATION

- 1 CLASSROOM
- 2 KINDERGARTEN
- 3 CAFETERIA/KITCHEN
M.P. ROOM

NEW CONSTRUCTION/ RECONSTRUCTION

- 4 LUNCH SHELTER

SITE DEVELOPMENT

- 5 NEW FACILITY PARKING
WITH DROP-OFF AREA
- 6 RESURFACE EXISTING PARKING
- 7 ADA ACCESS RAMP

- A. PROVIDE ADA ACCESS RAMP FROM PLAYGROUND TO FIELDS.
- B. MODERNIZATION OF CAFETERIA/MULTI-PURPOSE ROOM AND KITCHEN, INCLUDING CONSTRUCTION OF LUNCH SHELTER.
- C. ALTERATIONS TO CORRECT FLOODING ISSUES AT MAIN BLDG. A.
- D. REPLACE OLD ELECTRIC PANELBOARD WITH ADEQUATE BRANCH BREAKER WITH INCREASED CAPACITY.
- E. MODERNIZATION OF CLASSROOM BUILDING 'B', INCLUDING KINDERGARDEN AND PRE-K.
- F. PROVIDE SHADE STRUCTURES.

Audubon Leased Site

725 West Altadena Drive, Altadena, CA 91001



Principal:	NA
Grade Levels:	NA
Enrollment:	Current: NA Projected: NA
Current Capacity:	15 Permanent Classrooms 11 Modular Classrooms
Recent Projects:	No Measure Y Phase 1 Scope
School Program:	The Audubon campus houses the Odyssey Charter School program. Audubon has been identified as a potential surplus site.



SCHOOL FACILITY LEGEND

- PORTABLE
- REASSIGNED TEACHING SPACE

TEACHING SPACES

- 1 CLASSROOM
- 2 KINDERGARTEN
- 3 LAB
- 4 SHARED ED
- 5 PE

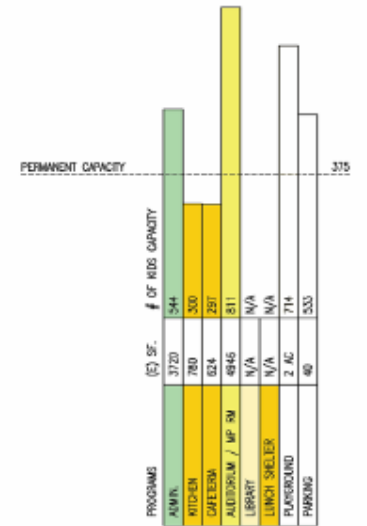
SHARED SUPPORT

- 6 LIBRARY
- 7 MULTI-PURPOSE
- 8 FOOD SERVICE
- 9 TOILET
- 10 WORKROOM, ETC.

CENTRAL ADMIN.

- 11 CENTRAL ADMIN.
- 12 MAINTAIN & OPERATION

ENROLLMENT AND CAPACITY INFORMATION



SITE SIZE (ACRES): 5.88



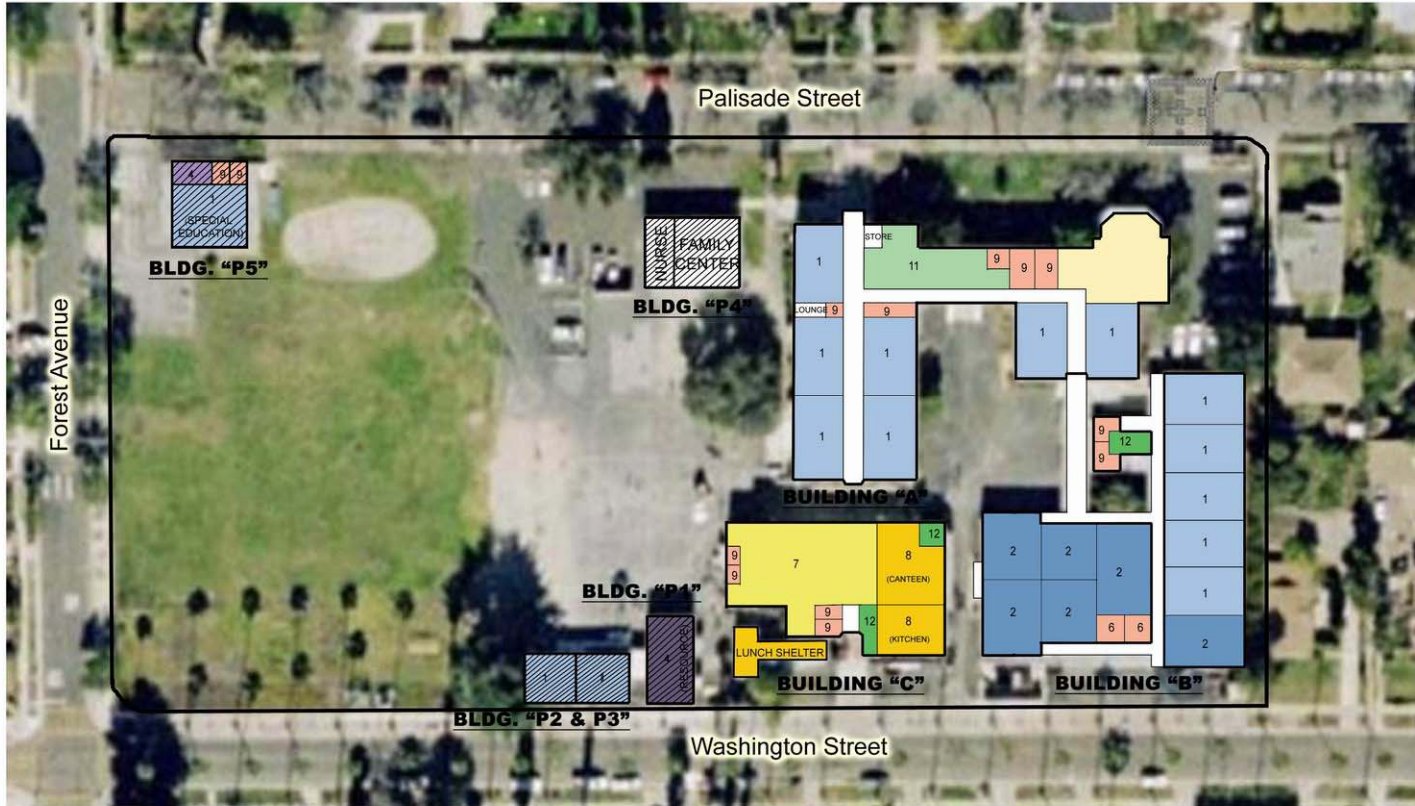
Grover Cleveland Elementary School

524 Palisade Street, Pasadena, CA 91103

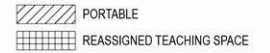


Principal:	Dr. Francine Williams
Grade Levels:	Kindergarten through 6 th Grade
Enrollment:	Current: 372 Projected: To Be Determined
Current Capacity:	20 Permanent Classrooms 5 Modular Classrooms
Recent Projects:	Measure Y Phase 1 Scope Including Quick Start Projects Budget \$4.0M, Completed 2003
School Program:	Grover Cleveland's educational program emphasizes early literacy, the importance of self-esteem, respect of others and the ability to solve problems both independently and cooperatively.. Unique programs include bilingual classes, special education/inclusion classes, gifted cluster classes. A Health Start Family Center is also operated on site. In addition, the following programs are offered on site; the Rose Bowl Aquatic Center-Swimming Program, the Pasadena Learns Program and a Pasadena Parks and Recreation after school program.

gkworks



SCHOOL FACILITY LEGEND



TEACHING SPACES

- 1 CLASSROOM
- 2 KINDERGARTEN
- 3 LAB
- 4 SHARED ED
- 5 PE

SHARED SUPPORT

- 6 LIBRARY
- 7 MULTI-PURPOSE
- 8 FOOD SERVICE
- 9 TOILET
- 10 WORKROOM, ETC.

CENTRAL ADMIN.

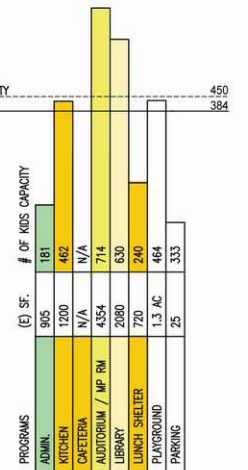
- 11 CENTRAL ADMIN.
- 12 MAINTAIN & OPERATION

ENROLLMENT AND CAPACITY INFORMATION



SITE SIZE (ACRES) : 4.02

PERMANENT CAPACITY 450
ENROLLMENT 384





AERIAL PHOTO

SITE SIZE (ACRES): 4.02

MODERNIZATION

- 1 FIVE CLASSROOMS
- 2 MULTI-PURPOSE / CAFETERIA / KITCHEN
- 3 CLASSROOM

NEW CONSTRUCTION/ RECONSTRUCTION

- 4 SIX KINDERGARTEN CLASSROOMS

SITE DEVELOPMENT

- 5 NEW DROP OFF AND FACULTY PARKING
- 6 NEW FENCED K PLAYGROUND WITH SHADE STRUCTURE
- 7 RESURFACE PLAYGROUND PROVIDE SHADE STRUCTURE
- 8 NEW LUNCH SHELTER
- 9 NEW TRASH ENCLOSURE
- 10 REGRADE DAMAGED DRAINAGE

SCHOOL: **CLEVELAND ES** IMMEDIATE NEEDS:

- A. MODERNIZATION OF CAFETERIA/MULTI-PURPOSE ROOM AND KITCHEN, INCLUDING REPAIR OF LUNCH SHELTER. REDESIGN OF LUNCH SHELTER AT NEW LOCATION.
- B. REPLACE OLD ELECTRIC PANELBOARDS AT BUILDING A & C WITH ADEQUATE BRANCH BREAKERS WITH INCREASED CAPACITY.
- C. REPLACE PLUMBING FIXTURES IN 4 RESTROOMS.
- D. SEPARATE DOMESTIC, FIRE, AND IRRIGATION WATER METERS.
- E. RECONSTRUCT KINDERGARTEN COMPLEX, INCLUDING PLAYGROUND.
- F. PROVIDE NEW SHADE STRUCTURES.
- G. REPLACE OLD DRINKING FOUNTAINS FOR ADA COMPLIANCE.

Edison Charter Site

3126 North Glenrose Avenue, Altadena CA 91001



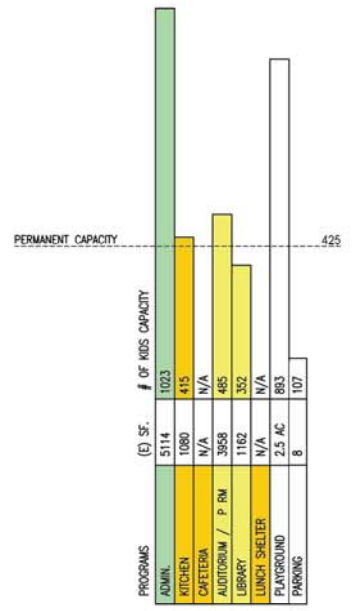
Principal:	NA
Grade Levels:	NA
Enrollment:	Current: NA Projected: NA
Current Capacity:	17 Permanent Classrooms 5 Modular Classrooms
Recent Projects:	Measure Y Phase 1 Scope Including Quick Start Projects Budget \$3.7M, Completed 2004
School Program:	Currently the Edison campus is used by (2) Charter School programs, the Nia Educational Charter School and the Rhythms of the Village Charter High School. Edison Charter Site has been identified as a potential surplus site.



SCHOOL FACILITY LEGEND

- PORTABLE
- REASSIGNED TEACHING SPACE
- TEACHING SPACES**
 - 1 CLASSROOM
 - 2 KINDERGARTEN
 - 3 LAB
 - 4 SHARED ED
 - 5 PE
- SHARED SUPPORT**
 - 6 LIBRARY
 - 7 MULTI-PURPOSE
 - 8 FOOD SERVICE
 - 9 TOILET
 - 10 WORKROOM, ETC.
- CENTRAL ADMIN.**
 - 11 CENTRAL ADMIN.
 - 12 MAINTAIN & OPERATION

CAPACITY INFORMATION



EDISON ELEMENTARY SCHOOL
 3126 North Glenrose Avenue, Altadena, CA 91001
 EXISTING SITE PLAN

Franklin Elementary School

527 West Ventura Street, Altadena, CA 91001



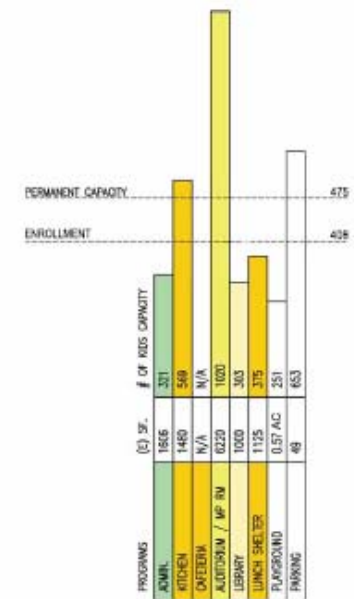
Principal:	Caroline Bermudez-Marin
Year Built:	Early 50's
Grade Levels:	Kindergarten and 1st through 6 th Grade
Enrollment:	Current: 387 Projected: To Be Determined
Current Capacity:	19 Permanent Classrooms 2 Modular Classrooms
Recent Projects:	Measure Y Phase 1 Scope Including Quick Start Projects Budget \$4.3M, Completed 2002
School Program:	Educational programs and Early Childhood Education. Franklin School houses The Franklin Elementary School Neighborhood Advocates Council (FESNAC). FESNAC is a volunteer organization made up of community members, school personnel, church and town council members, PTA representatives, business people and social service agencies. The school also participates in the LEARNS and I Have a Dream Foundation.

gkworks

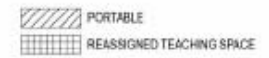


SITE SIZE (ACRES) : 6.17

ENROLLMENT AND CAPACITY INFORMATION



SCHOOL FACILITY LEGEND



TEACHING SPACES

- 1 CLASSROOM
- 2 KINDERGARTEN
- 3 LAB
- 4 SHARED ED
- 5 PE

SHARED SUPPORT

- 6 LIBRARY
- 7 MULTI-PURPOSE
- 8 FOOD SERVICE
- 9 TOILET
- 10 WORKROOM, ETC.

CENTRAL ADMIN.

- 11 CENTRAL ADMIN.
- 12 MAINTAIN & OPERATION





SITE SIZE (ACRES): 6.17



AERIAL PHOTO

- | MODERNIZATION | NEW CONSTRUCTION/RECONSTRUCTION | SITE DEVELOPMENT |
|---|---------------------------------|------------------------------|
| <p>1 ADMINISTRATION</p> <p>2 MULTIPURPOSE / CAFETERIA / KITCHEN</p> | <p>3 TEACHER'S LOUNGE</p> | <p>4 NEW SHADE STRUCTURE</p> |

SCHOOL: **FRANKLIN ES** IMMEDIATE NEEDS:

- A. MODERNIZATION OF CAFETERIA AND MULTI-PURPOSE ROOM.
- B. REPLACE OLD ELECTRIC PANELBOARDS AT CLASSROOM BLDG C AND MP BLDG WITH ADEQUATE BRANCH BREAKER WITH INCREASED CAPACITY.
- C. PROVIDE SHADE STRUCTURES IN PLAYGROUND.
- D. SEPARATE DOMESTIC/FIRE/IRRIGATION METERS.

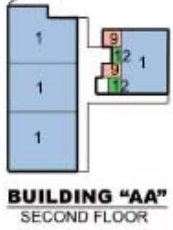
Jackson Elementary School

593 West Woodbury Road Altadena, CA 91001

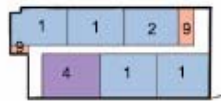


Principal:	Rose Ingber
Grade Levels:	Kindergarten and 1st through 6 th Grade
Enrollment:	Current: 406 Projected: To Be Determined
Current Capacity:	25 Permanent Classrooms 2 Modular Classrooms
Recent Projects:	Measure Y Phase 1 Scope Including Quick Start Projects Budget \$6.0M, Completed 2003
School Program:	Jackson School employees what is described as a meaning-centered thinking curriculum. Extracurricular activities include but are not limited to the Best Friends Program, Read Across Jackson Days, Before and After School Tutoring, the Parent Center and Healthy Start Center, LEARNS and Student Council.

gkworks

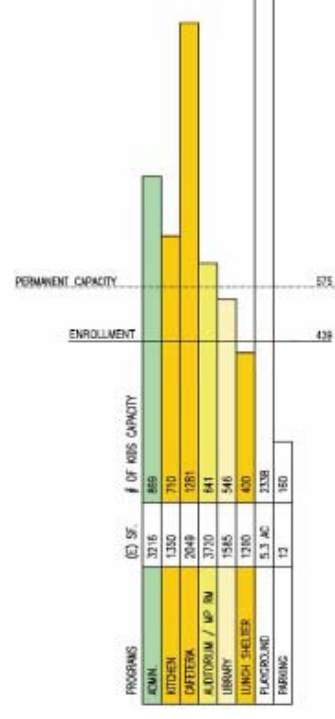


BUILDING "AA"
SECOND FLOOR



BUILDING "A"
SECOND FLOOR

ENROLLMENT AND CAPACITY CHART



SCHOOL FACILITY LEGEND

- PORTABLE (diagonal lines)
- REASSIGNED TEACHING SPAC (grid)
- TEACHING SPACES
 - 1 CLASSROOM
 - 2 KINDERGARTEN
 - 3 LAB
 - 4 SHARED ED
 - 5 PE
- SHARED SUPPORT
 - 6 LIBRARY
 - 7 MULTI-PURPOSE
 - 8 FOOD SERVICE
 - 9 TOILET
 - 10 WDRKRM ETC.
- CENTRAL ADMIN
 - 11 CENTRAL ADMIN
 - 12 MAINTN & OPERATION

SITE SIZE (ACRES) : 4.70



JACKSON ELEMENTARY SCHOOL (K-6)
593 West Woodbury Road, Altadena, CA 91103
EXISTING SITE PLAN





SITE SIZE (ACRES): 4.70



AERIAL PHOTO

MODERNIZATION

NEW CONSTRUCTION/ RECONSTRUCTION

SITE DEVELOPMENT

- 1 MULTIPURPOSE ROOM
- 2 CAFETERIA / KITCHEN
- 3 TWO CLASSROOMS
- 4

- 5 REPAIRS ON SECOND FLOOR DECK

- 6 NEW PARKING FOR FACULTY / DROP OFF AREA
- 7 RESURFACE PLAYGROUND
- 8 KINDERGARTEN PLAYGROUND

SCHOOL: **JACKSON ES** IMMEDIATE NEEDS:

- A. MODERNIZATION OF CAFETERIA AND KITCHEN.
- B. REPLACE OR UPGRADE THE FIRE SPRINKLER SYSTEM WHERE APPLICABLE.
- C. AT THE MAIN CLASSROOM , AUDITORIUM AND CAFETERIA BUILDINGS, REPLACE THE OLD ELECTRIC PANELBOARDS WITH ADEQUATE BRANCH BREAKERS WITH INCREASED CAPACITY.
- D. RENOVATION OF SEVERAL RESTROOMS, INCLUDING PLUMBING FIXTURES.
- E. SEPARATE DOMESTIC/FIRE/IRRIGATION METERS.
- F. REPLACE EXTERIOR DRINKING FOUNTAINS WITH ADA FIXTURES WHERE APPLICABLE.
- G. REPLACE WALL/WINDOW HVAC UNITS, AND EXISTING LIGHT FIXTURES WITH ENERGY EFFICIENT EQUIPMENT AND FIXTURES WHERE APPLICABLE.

Loma Alta Elementary School

3544 North Canon Boulevard, Altadena CA 91001



Principal:	Jennifer Yuré
Grade Levels:	Pre-Kindergarten through 6 th Grade
Enrollment:	Current: 311 Projected: NA
Current Capacity:	20 Permanent Classrooms 2 Modular Classrooms
Recent Projects:	Measure Y Phase 1 Scope Including Quick Start Projects Budget \$4.2M, Completed 2004
School Program:	Through a student centered approach to learning, the Loma Alta School strives to motivate students to reach their fullest potential. Educational programs include but are not limited to Special Education, Developmental Early Childhood curriculum, GATE, Bilingual Education, SEED Science curriculum and more.

gkworks



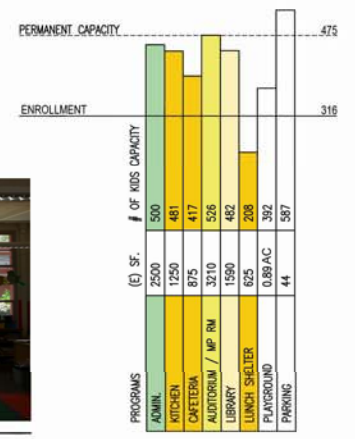
E. Loma Alta Drive

SITE SIZE (ACRES) : 5.40

SCHOOL FACILITY LEGEND

- PORTABLE
- REASSIGNED TEACHING SPACE
- TEACHING SPACES
 - 1 CLASSROOM
 - 2 KINDERGARTEN
 - 3 LAB
 - 4 SHARED ED
 - 5 PE
- SHARED SUPPORT
 - 6 LIBRARY
 - 7 MULTI-PURPOSE
 - 8 FOOD SERVICE
 - 9 TOILET
 - 10 WORKROOM, ETC.
- CENTRAL ADMIN.
 - 11 CENTRAL ADMIN.
 - 12 MAINTAIN & OPERATION

ENROLLMENT AND CAPACITY INFORMATION





SITE SIZE (ACRES): 5.40



AERIAL PHOTO

MODERNIZATION

1 CAFETERIA / KITCHEN / MULTIPURPOSE ROOM

NEW CONSTRUCTION/ RECONSTRUCTION

NONE

SITE DEVELOPMENT

2 DROP-OFF WITH EXPANDED FACULTY PARKING

3 PROTECTIVE MEASUREMENT AROUND FIRE RISERS - ADA REQUIREMENT

SCHOOL: **LOMA ALTA ES** IMMEDIATE NEEDS:

- A. MODERNIZE CAFETERIA/MULTI-PURPOSE ROOM AND KITCHEN.
- B. PROVIDE SECURE PATH OF TRAVEL THROUGHOUT PER ADA STANDARDS. INTRODUCE PROTECTIVE MEASUREMENTS AROUND PROTRUDING FIRE SPRINKLER RISERS ON PATH OF TRAVEL.
- C. REPLACE CLASSROOM SINKS WITH ADA FEATURES WHERE REQUIRED.
- D. REPAIR OR REPLACE DEFECTIVE FIRE ALARM SYSTEM.
- E. SEPARATE DOMESTIC/FIRE/IRRIGATION METERS.

Linda Vista Elementary School

1259 Linda Vista Ave, Pasadena, CA 91003



Enrollment:	Current: Closed
Current Capacity:	9 Permanent Classrooms 4 Modular Classrooms
Recent Projects:	NA
School Program:	Linda Vista, a closed school site, has been identified as a potential surplus site.



BUILDING "A"
SECOND FLOOR PLAN

SITE SIZE (ACRES): 4.80

SCHOOL FACILITY LEGEND

- PORTABLE
- REASSIGNED TEACHING SPACE

● TEACHING SPACES

- 1 CLASSROOM
- 2 PRE-K
- 3 LAB
- 4 SHARED ED
- 5 PE

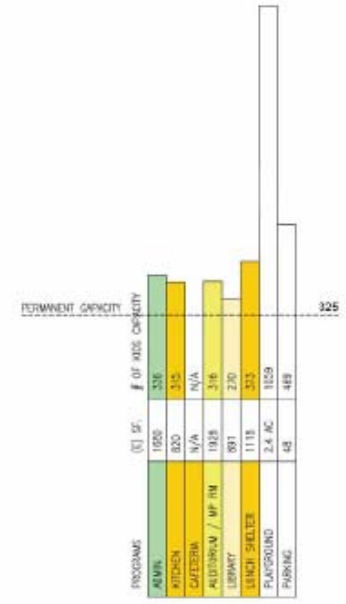
● SHARED SUPPORT

- 6 LIBRARY
- 7 MULTI-PURPOSE
- 8 FOOD SERVICE
- 9 TOILET
- 10 WORKROOM, ETC.

● CENTRAL ADMIN.

- 11 CENTRAL ADMIN.
- 12 MAINTAIN & OPERATION

CAPACITY INFORMATION



Roosevelt Elementary School

315 North Pasadena, Pasadena, CA 91103



Principal:	Dr. Kathleen Bautista
Grade Levels:	Kindergarten through 12th Grade
Enrollment:	Current: 324 Projected: To be Determined
Current Capacity:	21 Permanent Classrooms 3 Modular Classrooms
Recent Projects:	Measure Y Phase 1 Scope Including Quick Start Projects Budget \$5.9M, Completed 2003
School Program:	Roosevelt's mission is to "enhance the quality of education by: <ul style="list-style-type: none">· Increasing communication and participation by students, parents, and staff.· Clearly defining academic, behavior, health, and safety standards;· clearly defining professional responsibilities and assessment procedures to meet the needs of a diverse school population.· Unifying the entire school.

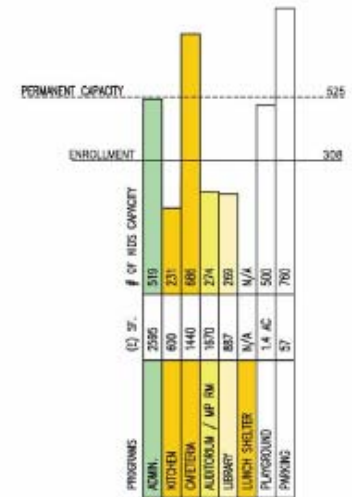
Roosevelt is unique in the school district as its student body ranges in age from preschool to 12th grade, with disabled students making up nearly 1/3 of the student population. Both general and special education programs are offered. Roosevelt offers the most supportive services to students with disabilities within the district.

gkworks



SITE SIZE (ACRES): 5.30

ENROLLMENT AND CAPACITY INFORMATION



SCHOOL FACILITY LEGEND

- PORTABLE
- REASSIGNED TEACHING SPACE

TEACHING SPACES

- CLASSROOM
- KINDERGARTEN
- LAB
- SHARED ED
- PE

SHARED SUPPORT

- LIBRARY
- MULTI-PURPOSE
- FOOD SERVICE
- TOILET
- WORKROOM, ETC.

CENTRAL ADMIN.

- CENTRAL ADMIN.
- MAINTAIN & OPERATION





SITE SIZE (ACRES): 5.30



AERIAL PHOTO



MODERNIZATION

NEW CONSTRUCTION/ RECONSTRUCTION

SITE DEVELOPMENT

1 KITCHEN

2 MULTI-PURPOSE / CAFETERIA / LUNCH SHELTER

3 NEW PHYSICAL THERAPY BUILDING

4 CLASSROOM / STORAGE

5 ADD STREET PARKING (WIDEN PASADENA AVENUE TO ALLOW DIAGONAL PARKING)

6 NEW OUTDOOR PATIO WITH SHADE STRUCTURE

7 NEW TRASH ENCLOSURE

8 REGRADE FIELD FOR SAFETY

SCHOOL: **ROOSEVELT ES** IMMEDIATE NEEDS:

- A. PROVIDE NEW MULTI-PURPOSE ROOM, PERHAPS AS AN EXTENSION OF EXPANDED CAFETERIA. PROVIDE LUNCH SHELTER AS EXTENSION OF NEW CAFETERIA.
- B. SCHOOL IS 1/3 SPECIAL ED. WITH MANY SEVERELY DISABLED STUDENTS – NEED AUTOMATIC DOOR OPENERS AT VARIOUS LOCATIONS, ESPECIALLY AT ADMIN. AREA.
- C. REPLACE NON-ADA COMPLIANT MODULAR PHYSICAL THERAPY BUILDING WITH NEW PERMANENT BUILDING.
- D. RELOCATE TRASH BIN LOCATION FROM NEAR K PLAYGROUND TO NEW AREA ADJACENT TO KITCHEN AND ACCESSIBLE AT PASADENA AVE.
- E. SEPARATE DOMESTIC/FIRE/IRRIGATION METERS.
- F. PROVIDE NEW SHADE STRUCTURE.
- G. HEATING IS DONE WITH 2 BOILERS BUT ONE IS NOT WORKING – PROVIDE A BETTER HEATING SYSTEM.
- H. REGRADE FIELDS FOR SAFETY.

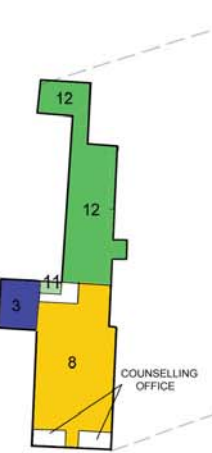
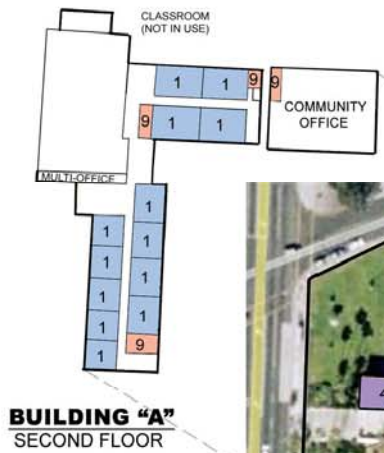
Charles W Eliot Middle School

2184 N Lake Avenue, Altadena, CA 91001



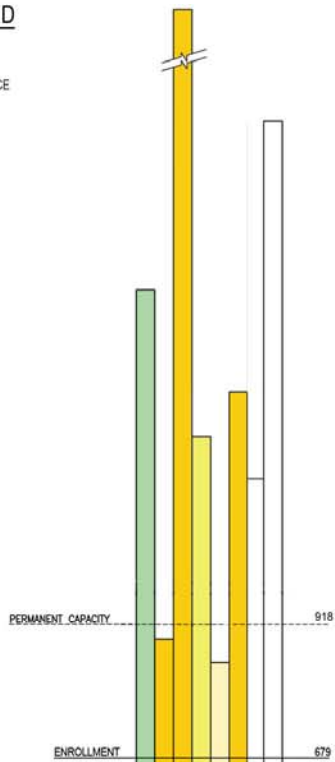
Principal:	Peter Pannell
Year Built:	1931
Grade Levels:	Grades 6, 7 and 8
Enrollment:	Current: 545 Projected: To Be Determined
Current Capacity:	44 Permanent Classrooms 4 Modular Classrooms
Recent Projects:	Measure Y Phase 1 Scope Including Quick Start Projects Budget \$12.1M, Completed 2003
School Program:	Eliot is part of the State Partnership school program and was part of the Historic Education Summit in 1994. Private adopters include NASA's Jet Propulsion Lab and Caltech/CAPSI which are committed to enhancing technology infrastructure on site. Eliot's educational program is comprehensive and includes Music and the Arts. There exists a partnership with the Armory Center for the Arts to enhance the Arts program. And a Science fair is held at JPL. In addition the PTA organizes various Career related activities for Eliot students.

gkworks



SCHOOL FACILITY LEGEND

- PORTABLE
- REASSIGNED TEACHING SPACE
- TEACHING SPACES
 - 1 CLASSROOM
 - 2 KINDERGARTEN
 - 3 LAB
 - 4 SHARED ED
 - 5 PE
- SHARED SUPPORT
 - 6 LIBRARY
 - 7 MULTI-PURPOSE
 - 8 FOOD SERVICE
 - 9 TOILET
 - 10 WORKROOM, ETC.
- CENTRAL ADMIN.
 - 11 CENTRAL ADMIN.
 - 12 MAINTAIN & OPERATION





SITE SIZE (ACRES): 12.10



AERIAL PHOTO

MODERNIZATION

NEW CONSTRUCTION/ RECONSTRUCTION

SITE DEVELOPMENT

- 1** CAFETERIA / KITCHEN (FIRST FLOOR)
- 2** AUDITORIUM (SECOND FLOOR)
- 3** CONVERT SPACES TO COMMUNITY SHARED

- 4** LOCKER FOR BOYS AND GIRLS (RECONSTRUCTION)
- 5** REPLACE BOARDED WINDOWS WITH SECURED GLAZING

- 6** NEW PARKING FOR FACULTY
- 7** RESURFACE PLAYGROUND
- 8** NEW LANDSCAPE

SCHOOL: **ELIOT MS**

IMMEDIATE NEEDS:

- A. MODERNIZATION OF CAFETERIA/AUDITORIUM AND KITCHEN. UPGRADE AUDITORIUM TO MODERNIZE TECHNOLOGY AND LIGHTING. INCLUDE UPGRADE OF BACKSTAGE RIGGING AND PROVISION OF SMOKE HATCH FOR SAFETY.
- B. INSTALL SECURITY MEASURES THROUGHOUT SCHOOL, INCLUDING FENCING AND EXTERIOR LIGHTING.
- C. PROVIDE ADA ACCESS TO THE AUDITORIUM AND MAIN CLASSROOM BUILDING FROM LAKE AVE. AND FIELD.
- D. SEPARATE DOMESTIC/FIRE/IRRIGATION WATER METERS.
- E. PROVIDE STRUCTURAL ASSESSMENT FOR RETROFITTING OF THE SCHOOL'S LANDMARK TOWER.
- F. REPLACE BOARDED-UP, NORTH FACING WINDOWS IN ART CLASSROOMS 'C' AND 'D' WITH SECURED GLAZING.

gkworks

Washington Accelerated School

1520 N Raymond Avenue, Pasadena, CA 91103



Principal:	Karrone Meeks-Clark
Grade Levels:	Pre-kindergarten, 1 st through 5 th grade
Enrollment:	Current: 784 Projected: To Be Determined
Current Capacity:	27 Permanent Classrooms 20 Modular Classrooms
Recent Projects:	Measure Y Phase 1 Scope Including Quick Start Projects Budget \$16.1M, Completed 2003 (including Washington MS and Children's Center work)
School Program:	The "Accelerated School" concept was chosen because of its philosophy that all students should be, and can be, encouraged to achieve to the best of their ability through powerful learning experiences.

gkworks

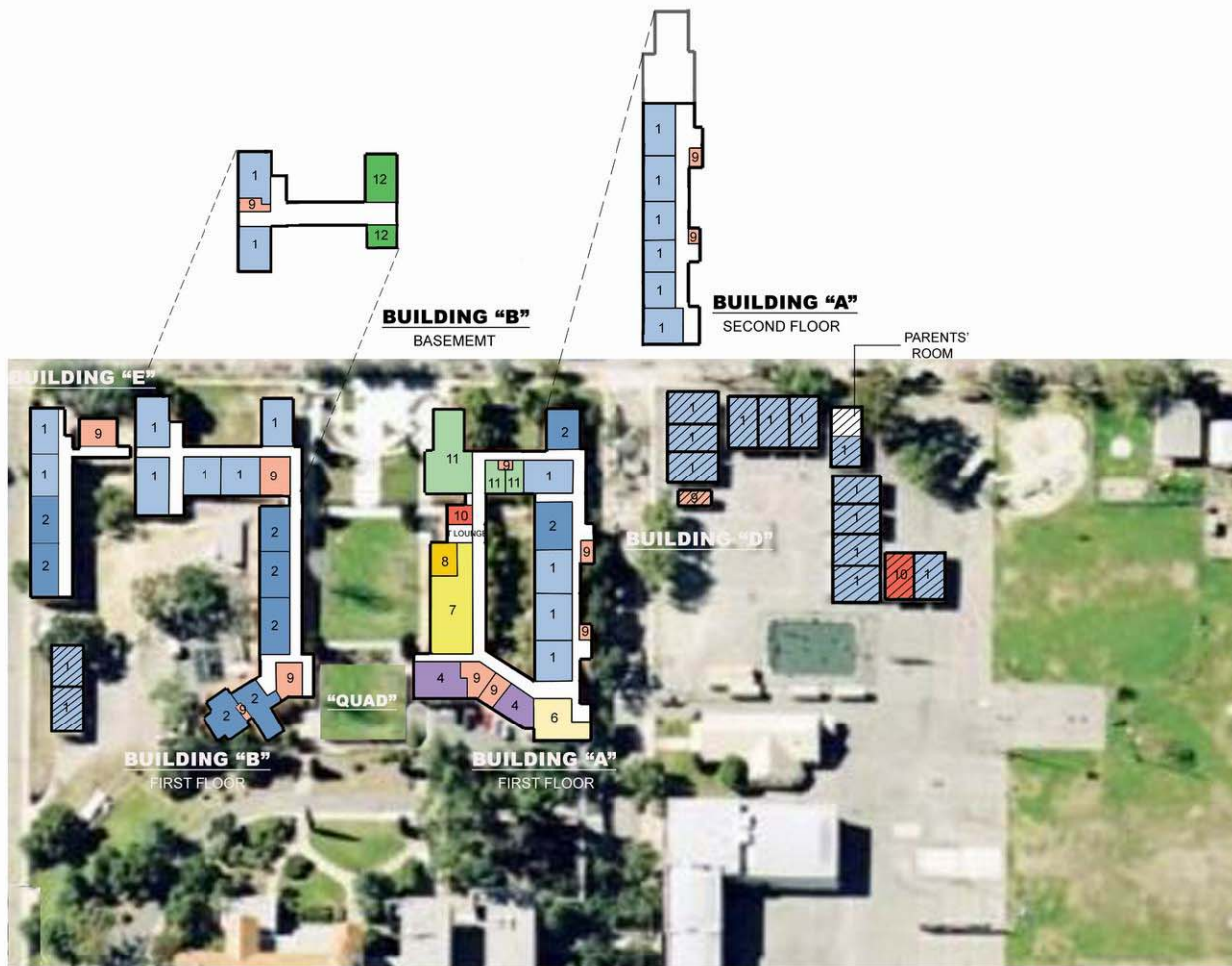
Washington Children's Center

130 East Penn Street, Pasadena, CA 91103



Director:	Ms. Washington
Grade Levels:	Preschool
Enrollment:	Current: Unknown Projected: To Be Determined
Current Capacity:	3 Permanent Classrooms 2 Modular Classrooms
Recent Projects:	NA

ENROLLMENT AND CAPACITY INFORMATION



SCHOOL FACILITY LEGEND

- PORTABLE
- REASSIGNED TEACHING SPACE
- TEACHING SPACES
 - 1 CLASSROOM
 - 2 KINDERGARTEN
 - 3 LAB
 - 4 SHARED ED
 - 5 PE
- SHARED SUPPORT
 - 6 LIBRARY
 - 7 MULTI-PURPOSE
 - 8 FOOD SERVICE
 - 9 TOILET
 - 10 WORKROOM, ETC.
- CENTRAL ADMIN.
 - 11 CENTRAL ADMIN.
 - 12 MAINTAIN & OPERATION

PERMANENT CAPACITY 750

ENROLLMENT 774

PROGRAMS	(E) SF.	# OF KIDS CAPACITY
ADMIN	2830	782
KITCHEN	532	280
CAFETERIA	N/A	N/A
AUDITORIUM / MP RM	3170	546
LIBRARY	1780	614
LUNCH SHELTER	N/A	N/A
PLAYGROUND	12.45 AC	5493
PARKING	59	747



WASHINGTON ACCELERATED ELEMENTARY SCHOOL (K-5)
 1520 N. Raymond Avenue, Pasadena, CA 91103
 EXISTING SITE PLAN





SITE SIZE (ACRES): 11.20



AERIAL PHOTO

MODERNIZATION

NEW CONSTRUCTION/ RECONSTRUCTION

SITE DEVELOPMENT

1 CAFETERIA / KITCHEN

2 CLASSROOM BUILDING
(REPLACEMENT OF PORTABLES)

3 FACULTY PARKING/
DROP OFF AREA

4 RESURFACE PLAYGROUND

5 DEMO OLD BUILDING
NEW PRE-K PLAYGROUND

- A. EXPAND PARKING AND INCLUDE INTERNAL DROP-OFF/PICK-UP LOOP.
- B. PROVIDE FENCING AROUND SCHOOL AND INTRUSION DETECTORS CAMPUS-WIDE, COUPLED WITH UPGRADED EXTERIOR LIGHTING.
- C. EXPAND LIBRARY AND CAFETERIA TO ACCOMMODATE BOTH ELEMENTARY AND MIDDLE CAMPUSES. INCLUDE MODERNIZATION OF KITCHEN AND NEW LUNCH SHELTER.
- D. SEPARATE DOMESTIC, FIRE, AND IRRIGATION WATER METERS.
- E. EXPAND MULTI-PURPOSE ROOM OR PROVIDE NEW BUILDING.
- F. REPLACE SINKS AND COUNTERS WITH NEW ADA COMPLIANT FIXTURES WHERE APPLICABLE.
- G. UPGRADE ADA ACCESS WHERE NEEDED.
- H. REPLACE PORTABLE BUILDINGS WITH NEW PERMANENT BLDG. TO INCLUDE KINDERGARTEN CLASSROOM WITH TOILETS AND PLAYGROUND SPACE.
- I. REPLACE WALL-MOUNTED AC UNITS IN BLDGS. 'B' AND 'D' WITH CENTRAL HVAC SYSTEM.
- J. REPLACE PORTABLE BUILDINGS HOUSING THE CHILDRENS CENTER WITH NEW PERMANENT BUILDING AND CORRESPONDING RESTROOMS AND PLAYGROUND, INCLUDING A SHADE STRUCTURE.



Washington Middle School

1505 N Marengo Avenue, Pasadena, CA 91103

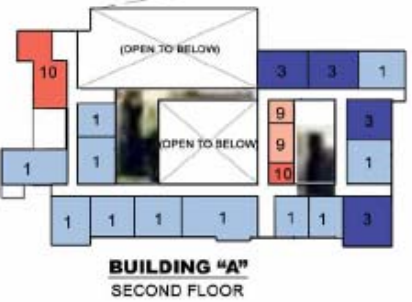


Principal:	Alejandro Ruvalcaba
Grade Levels:	Grades 6, 7 and 8
Enrollment:	Current: 487 Projected: To Be Determined
Current Capacity:	42 Permanent Classrooms 0 Modular Classrooms
Recent Projects:	Measure Y Phase 1 Scope Including Quick Start Projects Budget \$16.1M, Completed 2003 (including Washington Accelerated and Children's Center work)
School Program:	The following programs are offered at Washington Middle School: <ul style="list-style-type: none">• Math, Science, and Technology Magnet Program• EIA-LEP (English Language Learner)• Special Education (RSP/SDC)• After-School Tutorial• Student Counseling through Five Acres• Pasadena Learns• Pasadena City Parks & Recreation• Performing Arts (Instrumental Music and Glee Club).

gkworks

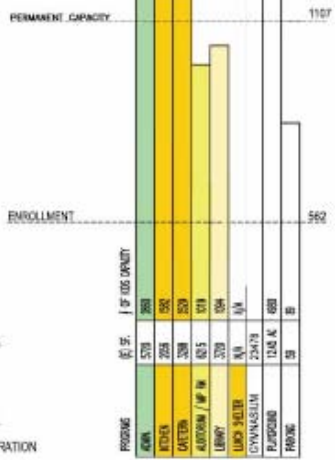


SITE SIZE (ACRES) : 14,40



SCHOOL FACILITY LEGEND

- PORTABLE
- REASSIGNED TEACHING SPACE
- **TEACHING SPACES**
 - 1 CLASSROOM
 - 2 KINDERGARTEN
 - 3 LAB
 - 4 SHARED ED
 - 5 PE
- **SHARED SUPPORT**
 - 6 LIBRARY
 - 7 MULTI-PURPOSE
 - 8 FOOD SERVICE
 - 9 TOILET
 - 10 WORKROOM, ETC.
- **CENTRAL ADMIN.**
 - 11 CENTRAL ADMIN.
 - 12 MAINTAIN & OPERATION



WASHINGTON MIDDLE SCHOOL (6-8)
1505 N. Marengo Avenue, Pasadena, CA 91103
EXISTING SITE PLAN





SITE SIZE (ACRES): 14.40



AERIAL PHOTO

MODERNIZATION

- 1 CAFETERIA / KITCHEN
- 2 AUDITORIUM
- 3 REROOF LIBRARY

NEW CONSTRUCTION/ RECONSTRUCTION

- 4 GYM / LOCKER / DANCE / CHOIR
- 5 ELEVATOR AT MAIN ENTRANCE

SITE DEVELOPMENT

- 6 LUNCH SHELTER
- 7 RESURFACE PLAYGROUND

- A. RECONSTRUCT ENTIRE GYM WITH NEW CURRENT ELECTRICAL, MECHANICAL, LIGHTING, ACOUSTICAL, TECHNOLOGICAL, AND INTERIOR FINISH STANDARDS. MODERNIZATION WILL INCLUDE STRUCTURAL UPGRADING.
- B. MODERNIZE AUDITORIUM. INCLUDE REPLACEMENT OF RIGGING SYSTEM, CURTAIN AND ELECTRICAL SWITCH GEAR.
- C. MODERNIZE AND EXPAND CAFETERIA. INCLUDE PROVISION OF NEW LUNCH SHELTER AND TEACHERS' LOUNGE.
- D. MODERNIZE CLASSROOM BUILDING 'C'.
- E. REPAIR CLOCK, P.A., AND BELL SYSTEMS.
- F. REPAIR AND/OR REPLACE SECURITY FENCING WHERE NEEDED.
- G. PROVIDE NEW HVAC SYSTEM FOR THE AUDITORIUM, CAFETERIA, KITCHEN AND GYMNASIUM.
- H. REPLACE OLD ELECTRIC PANELBOARDS WITH ADEQUATE BRANCH BREAKERS WITH INCREASED CAPACITY.
- I. SEPARATE DOMESTIC, FIRE, AND IRRIGATION WATER METERS.
- J. REPAIR OR REPLACE FIRE ALARM / BELL SYSTEM.
- K. REPLACE FLOOR MOUNTED HEATERS IN BUILDING 'A' CLASSROOMS WITH NEW FLOOR OR WALL MOUNTED UNITS.

gkworks

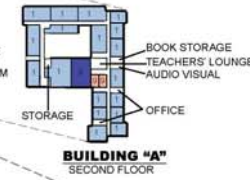
John Muir High School

1905 N Lincoln Avenue, Pasadena CA 91103



Principal:	Sheryl Orange
Grade Levels:	9 th through 12 th Grade
Enrollment:	Current: 1143 Projected: To Be Determined
Current Capacity:	65 Permanent Classrooms 12 Modular Classrooms
Recent Projects:	Measure Y Phase 1 Scope Including Quick Start Projects Budget \$26.5M, Completed 2004
School Program:	Goals at John Muir High School include giving “full and complete support to changes in their instructional delivery system and restructuring efforts to create a thinking, learning, meaning centered curriculum.” Special programs at Muir include: <ul style="list-style-type: none">· Dimensions: a math and art integrated curriculum· Business / Finance Partnership Academy· GeoSpace Partnership Academy· Arts and Entertainment Industry Magnet: emphasizes music, dance, theater and visual arts

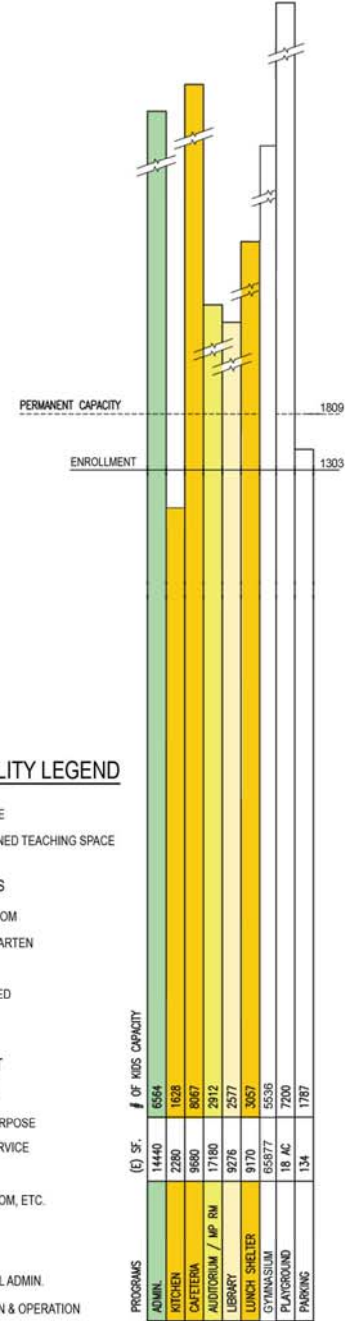
gkworks



SITE SIZE (ACRES) : 40.00

SCHOOL FACILITY LEGEND

- PORTABLE
- REASSIGNED TEACHING SPACE
- TEACHING SPACES
 - 1 CLASSROOM
 - 2 KINDERGARTEN
 - 3 LAB
 - 4 SHARED ED
 - 5 PE
- SHARED SUPPORT
 - 6 LIBRARY
 - 7 MULTI-PURPOSE
 - 8 FOOD SERVICE
 - 9 TOILET
 - 10 WORKROOM, ETC.
- CENTRAL ADMIN.
 - 11 CENTRAL ADMIN.
 - 12 MAINTAIN & OPERATION



JOHN MUIR HIGH SCHOOL (9-12)
 1905 N. Lincoln Avenue, Pasadena, CA 91103
 EXISTING SITE PLAN





AERIAL PHOTO



SITE SIZE (ACRES): 40.00

MODERNIZATION

- 1 AUDITORIUM (FIRST FLOOR)
- 2 CAFETERIA (BASEMENT)

NEW CONSTRUCTION/ RECONSTRUCTION

- 3 BOY'S LOCKER ROOM
- 4 NEW CANTEEN
- 5 VOCATIONAL CENTER BUILDING

SITE DEVELOPMENT

- 6 PROPOSED STUDENT & VISITORS PARKING
- 7 PROPOSED STAFF PARKING
- 8 CENTRAL PARK
- 9 QUAD LANDSCAPING
- 10 VOCATIONAL CENTER QUAD.

- A. MODERNIZE KITCHEN, CAFETERIAS AND SERVING LINE AREAS WITH NEW HVAC AND ELECTRICAL SYSTEMS, EQUIPMENT AND INTERIOR FINISHES, INCLUDING NEW FLOORING AND CEILINGS.
- B. MODERNIZE GYMNASIUM COMPLEX, INCLUDING COACH OFFICES, UNIFORM STORAGE ROOMS, LOCKER ROOMS, BASKETBALL COURTS, POOL AND POOL DECKS. REPLACE LIGHTING AND ACOUSTICAL TILE IN BASKETBALL COURTS.
- C. MODERNIZE MAIN ADMIN. / CLASSROOM BUILDING AND AUDITORIUM TO INCLUDE UPGRADING OF ADA REQUIREMENTS, INTERIOR LIGHTING,
- D. REPLACE OLD ELECTRIC PANELS AT BLDGS. 'B', 'D', 'G', 'L' AND 'M' WITH ADEQUATE BRANCH BREAKER AND INCREASED CAPACITY.
- E. ABATE HAZARDOUS MATERIAL.
- F. PROVIDE SHADE STRUCTURES WHERE NEEDED.
- G. PROVIDE ADA ACCESS PATH TO ATHLETIC FIELDS AND FACILITIES (INCLUDE FOOTBALL FIELD BLEACHERS) EXTERIOR DRINKING FOUNTAINS AND ACCESSIBLE FEATURES AT THE POOL AND POOL DECK.
- H. INSTALL ARTIFICIAL SURFACES IN FOOTBALL TRACK AND FIELD.
- I. SEPARATE DOMESTIC/FIRE/IRRIGATION METERS.
- J. AT BLDG. 'A', PROVIDE SIGNAL DEVICES, POWER OUTLETS, FIRE ALARM DEVICES AND CHECK OPERATION OF HVAC CONDENSATE LINES. AT BLDGS. 'G' AND 'N', REPLACE HVAC UNITS WITH NEW.
- K. REPLACE WINDOWS ON BLDG. 'G' ALONG WITH INTERIOR AND OTHER EXTERIOR IMPROVEMENTS.

District Service Center

740 W. Woodbury Road, Pasadena, CA 91103



Assessment Executive Summary:

Provide accessible facilities, including access to the Conference Room, restrooms and District offices. Provide elevator access to offices at 2nd floor of warehouse building.

Provide parking lot striping and signage to comply with accessibility codes.

The structural engineer has identified five buildings on site (Auto shop, auto wash, warehouse, lunch shelter and fuel island) as Building Category Type-2. These buildings and structures will require detailed seismic evaluation and are indicated on the structural data evaluation sheet. In addition to this, all seismic and equipment anchoring throughout the site will need to be upgraded to meet current code requirements.

The systems engineers found the MEP (Mechanical/Electrical/Plumbing) systems to be generally in good condition. Equipment and fixtures that will be replaced include: old electric panelboards at the offices, warehouse and service center buildings (replaced with adequate branch breakers w/ increased capacity), light fixtures at non-office buildings (replaced with new high-efficiency lighting) and all HVAC systems throughout the site. Accessibility / code work to include upgrading and providing additional fire/smoke detection and alarms.

The District's 2004 Ahera hazardous material reinspection report identified 19 locations at the site with hazardous material. The report ranks the asbestos locations with a priority of concern number ranging from 1 (immediate action required) to 9 (no response action required). Of the 19 locations on site, all are ranked very low at either an 8 or 9 priority.



West Woodbury

Castles Avenue

Canada Avenue

© 2008 Tele Atlas

© 2007

Google



Hodges Children's Center

36 West Peoria, Pasadena, CA 91107



Director:	Judith Barhydt
Grade Levels:	Kindergarten and 1st through 6 th Grade
Enrollment:	Current: Unknown Projected: To Be Determined
Current Capacity:	10 Permanent Classrooms 0 Modular Classrooms
Recent Projects:	Unknown
School Program:	Special Education Preschool, including Adaptive Physical Education





SITE SIZE (ACRES): 1.0

SCHOOL FACILITY LEGEND

- PORTABLE
- REASSIGNED TEACHING SPACE

● TEACHING SPACES

- 1 CLASSROOM
- 2 KINDERGARTEN
- 3 LAB
- 4 SHARED ED
- 5 PE

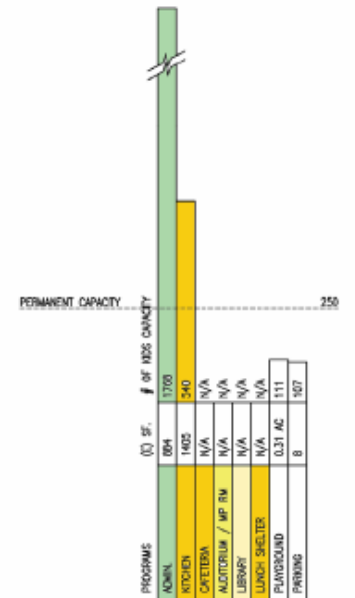
● SHARED SUPPORT

- 6 LIBRARY
- 7 MULTI-PURPOSE
- 8 FOOD SERVICE
- 9 TOILET
- 10 WORKROOM, ETC.

● CENTRAL ADMIN.

- 11 CENTRAL ADMIN.
- 12 MAINTAIN & OPERATION

CAPACITY INFORMATION



Preliminary Revenue Assumptions

	Millions \$
General Obligation Bond	350.0
Developer Fees and Other Capital Funds	15.0
Williams Settlement Funding	15.0
Deferred Maintenance	15.0
State Modernization and Other Grants	20.0
State Joint Use and Partnership Grants	6.0
Joint Use/Partnership Grants –Athletic Fields (50%)	4.0
State Funding - seismic	10.0
Career Technical Matches – CTE (50%)	15.0
Asset Sales Account	15.0
Total Estimated Funds Available	465.0

The *Current* Project List

- Each site has a project list, which will be displayed in alphabetical order; the current list will be posted to the District website at the following link:

<http://www.pusd.us/staticpages/index.php?page=20080404104930191>

- In addition, the draft five year Deferred Maintenance Plan will be provided tonight to show projects by site, which will be funded with Deferred Maintenance funding, and are not part of this list

Ongoing Accountability and Transparency

- Since the last bond, a new law requires the District to establish an Independent Citizens Oversight Commission to scrutinize how the bond funds are being allocated and spent. The Oversight Committee must include, at a minimum: one person from the business community, one person from a taxpayers' organization, one person from a senior citizens' organization, one parent, and one member of the PTA or school site council; it may not include any District employees. The Oversight Committee would meet quarterly and publish an annual report to the school board and community
- The District is evaluating and will adopt a proven project tracking system to financially track and manage all of the projects. This will alert the District before projects go over budget so that the necessary corrections can be made
- The Facilities Master plan will be complete and no significant projects will be initiated after bond passage until a complete Facilities organization is in place and functioning
- The School Board and Oversight Committee will personally tour completed projects
- The District will establish a public website that tracks the projects completed on a school by school basis
- These monitoring and accountability measures will allow the District to know exactly where it is at vis-à-vis where it should be, and allow it to make changes if the District's needs or priorities should suddenly change
- The Facilities Master Plan will be updated quarterly in summary and annually in detail, and will be a true "living" document
- All Facilities Master Plan public documents are posted to the PUSD website

Next Steps

- **Finalize Prioritization - September 15, 2008**
- **Complete Plan - September 26, 2008**
- **Present Plan to Board - October 7, 2008**



Pasadena Unified School District Facilities Master Plan Community Presentations



Questions & Answers