

Pasadena Unified School District Facilities Master Plan Community Presentations



September 13, 2008

AGENDA

- **Introduction - Superintendent Edwin Diaz**
- **Mission - Superintendent**
- **The Process and Community Involvement; The FMP Committee – Chief of Staff Steve Brinkman**
- **Project Prioritization – Chief of Staff**
- **Site Facilities Planning / Project Lists – gkkworks**
- **Revenue Assumptions – Chief of Staff**
- **Next Steps – Chief of Staff**

What is a Facilities Master Plan?

- In March 2008 the Board commissioned a formal facilities master plan process to build on and complete the work started with Bunton Clifford Associates (“BCA”). A Statement of Qualifications process was undertaken and the firm of gkkworks (the “Firm”), with an office in Pasadena and extensive experience in facilities master planning, was hired on March 25, 2008 to assist in the development of a *comprehensive* Facilities Master Plan. This Plan not only identifies needs, but is also intended to do the following, which identifies it as a true planning process:
 - Develop guidelines and plans for equity among campuses
 - Develop a Master Plan for each campus to promote optimum site utilization and form the basis for later conceptual and detailed architectural plans
 - Provide input to the Board on the tough decisions around grade configuration, and asset management
 - Identify and quantify revenue sources
 - Identify public and joint use opportunities and encourage Board policy decisions related to public use and joint use of facilities
 - Encourage and transmit community input into the process
 - Develop project cost estimates
 - Prioritize projects and timing
 - Provide a plan for ongoing accountability
- ❖ This Plan is the culmination of an 18 month process and is intended to be a “living” document subject to frequent review and revision as new information or needs arise.

Facilities Master Plan Goal

The overall goal of this Facilities Master Plan is **EQUITY**:

providing each student with equitable access to a high quality education no matter which school he or she attends

Mission Statement

Recognizing PUSD as the largest landholder in the Pasadena area with the express obligation to use education facilities to educate local children, the "Mission" of the Facilities Master Plan is to provide:

- 1) Effective use of all District land, facilities and designated funding to correlate with and support District education programs, site capacities and enrollment;**
- 2) Comprehensive, bricks-and-mortar planning for ongoing deferred maintenance, renovation and upgrading of all facilities;**
- 3) Procedures for community access to District facilities compatible with priority use by PUSD students enrolled in District programs.**

The Origin of the Plan

- “Quick Wins” projects of 2007
- The Bunton Clifford Associates (“BCA”) Needs Assessments of 2007
- The Formal Facilities Master Plan process was approved by the Board of Education in March 2008 (gkkworks architects hired to facilitate planning) with the first comprehensive Facilities Master Plan to be complete 10-01-08 – A “Living” document; the process never stops
- Facilities Master Plan Committee was established in April 2008 and meets most Fridays for at least two hours

Timeline/Deliverables

DATE	DELIVERABLE	RESPONSIBILITY
April 2008	Develop a process for stakeholder input by establishing a working committee	District
Apr-May 2008	Prepare Site Utilization Plans	Architect/District
July 2008	Draft cost estimate	Architect/District
July 2008	Draft Facilities Master Plan	Architect/District
August 2008	Draft Asset Management Studies	Architect/District
Apr-Sep 2008	Community Outreach	District/Architect
October 2008	Final Facilities Master Plan	District/Architect

The Process

➤ Four sources of site assessments:

- ❑ The BCA Needs Assessments of 2007*
- ❑ The gkkworks Facilities Planning Assessments of 2008
- ❑ Site Administrators Assessments
- ❑ PUSD Maintenance and Operations Assessments of 2008

*BCA Priorities – Foundation for Future Assessments

Priority 1: Code, Health, Safety

Priority 2: Infrastructure – Building Shell Integrity, Site Utilities

Priority 3: Program Scope – Classroom Renovations, New Construction Program support, Classroom and kinder reconstruction/replacement, gymnasiums, Career Technical Education, technology, fields

Priority 4: Miscellaneous Modernizations - Support facilities, outdoor spaces, general facilities improvements

Total Estimated Cost Range

\$455 - \$625 Million

Makeup of Facilities Master Plan Committee

1 Member of the Citizens Oversight Committee

1 Elementary principal

1 Middle school principal

1 High school principal

4 Citizens at large – One minimum from each of the three PUSD communities

1 City Representative

3 Board members now members of the Facilities and Capital Subcommittee

District Staff:

Director of Facilities

Chief of Staff

Ex officio - Superintendent

➤ Open meeting process observed

Project Prioritization

- The process of project prioritization was undertaken through an initial lens of the four categories expressed earlier: Code, Health, Safety; Infrastructure; Program Scope; and Miscellaneous Modernizations. All projects were categorized into one of the four categories and then a cost estimate was performed. The Firm was charged with clearly identifying those projects which were absolutely necessary to conform to the Code, Health, and Safety priority based on DSA/ADA requirements. The Committee was asked to prioritize the projects for the other categories with an eye toward future projects which might result from Board decisions on grade configuration resulting from the options presented by the Committee to the Board at its August 19 Board Study session. The Committee spent three meetings prioritizing projects by site and District-wide.

Several other methods of prioritization as to timing were also identified:

- Those campuses which did not get appreciable monies from the last capital plan or with projects not undertaken or completed in the last plan
- District-wide categories – addressed on the following page

District-Wide Projects

- In addition to the project lists by site there are projects that will be addressed District-wide that fall in the following categories that will not appear on the individual site project lists and need to be considered when one reviews the projects to be undertaken as part of a Facilities Master Plan. The categories are listed below;
- Energy and water savings projects including window replacements and lighting upgrades
- Technology projects including computers
- Career Technical Education projects
- Deferred Maintenance projects
- Remove/replace, if applicable, Portables over 20 years of age
- Painting and exterior appearance upgrades
- Seismic upgrades

SITE NEEDS ASSESSMENT



ELEMENTARY SCHOOL	MIDDLE SCHOOL	HIGH SCHOOL	CHARTER SCHOOL	CHILDREN CENTER
-------------------	---------------	-------------	----------------	-----------------

PASADENA UNIFIED SCHOOL DISTRICT
SCHOOL FACILITIES MASTER PLAN NEEDS ASSESSMENT

School Site: Don Benito ES Enrollment: 808
 Pre-K Campus Staff: 50+/-

Date Built: 1950s

Site: 8.9 acres

School Needs Categories	Needs Reported by BCA Architects	Additional Needs Reported by the site / PUSD M & O	Needs Reported by gkkworks
1. SAFETY, HEALTH, CODE			
1.1 Structural Requirements, Seismic Stability			
1.1.1 Primary Structure	All seismic and equipment anchoring need to be upgraded.		
1.1.2 Ceilings			Need to replace glued-on ceilings are old and tend to fall off.
1.1.3 Cabinets, Equipment			
1.1.4 Portables			
1.2 Fire / Life Safety			
1.2.1 Exits (Locations, Widths)			
1.2.2 Fire Dep. Access			
1.3 HVAC / Plumbing / Electrical			
1.3.1 Fire Alarm Systems	Provide new fire sprinkler system at all bldg.		
1.3.2 Ventilation		HVAC in Admin. area is not consistent.	Balance central HVAC system in Admin. Bldg.
1.3.3 HVAC Energy Conservation			
1.3.4 Electrical Energy Conservation			
1.3.5 Toilet Fixture Count		Adults have restrooms only in two areas of campus: Administration area and in the Multi-P. Room.	Provide equal distribution of adult restrooms through construction or modification.
1.3.6 Other			
1.4 Hazardous Materials / Pest Control			
1.4.1 Asbestos Mitigation	Two were noted. One ranks 4 (at pipe insulation in the auditorium attic) the other rank 6 (at heater duct in the kitchen)		
1.4.2 Lead Paint Mitigation			Explore possibility of existence of lead paint in (e.g. windows) 1950s era structures.
1.4.3 Termite, Dry Rot Damage			

MODEL SCHOOL STUDY

ELEMENTARY SCHOOL

K-5

ENROLLMENT RANGE	:	400 – 700
LOADING	:	K -3-20/CR, 25-32/CR
WALKING DISTANCE	:	1.5-MILE RADIUS

I. Instructional Facilities:

1. Pre-kindergarten (1,350 SF)
2. Kindergarten (1,350 SF)
Double and Single Sessions
3. Classroom (960 SF)
Full size classroom for all grades
Small group areas - Teacher's workrooms / Storage
4. Special Education:
Resource Specialist (RSP 720 SF. – or 1 CR)
Speech and Language classroom (250 SF. - or ½ CR)
Special Day Class (SDC)
School psychologist

II. Library / Media Center: (2.9 SF / Student)

Reading Room, Storyteller, Workroom, Stacks, Prep Room, A.V. Storage, automated library and textbook system, computer search stations with Internet access – Broadcast Center, LCD projection system

III. Administration (3.7 SF / Student)

Secretarial core, Public and Student Waiting, Principal's Office / Toilet, Nurse (desk and record cabinet) / Toilet, Cot room (2), Administration Workroom, Supply Room, Faculty Workroom, Mailroom, Conference Room, Staff Toilets, conference room
Parent / Community Room
Curriculum resource teacher/literacy coach - include office space in
Health services partners (counseling/mental health)

works
dk
g

MODEL SCHOOL STUDY

MIDDLE SCHOOL

6 – 8

ENROLLMENT RANGE	:	700 – 1000
LOADING	:	27-32 / CR
WALKING DISTANCE	:	3.0-MILE RADIUS

I. Instructional Facilities:

1. Classrooms (960 SF): Small group areas - Teacher's workrooms / Storage
2. Art Classrooms:
Arts and Crafts (1,600 SF/each)
One (1) ceramic / kiln (1,350 SF)
Prep / Storage / Teacher's Workroom (600 SF)
3. Lab Classrooms:
Science Labs (1,200 SF/each) with Prep Room
Computer Labs (1,200 SF each)
(Class for Typing / Keyboard)
Teacher's Workroom (400 SF)
4. Multi-Media:
T.V./Radio Studio (960 SF)
Teacher's Workroom (100 SF)
5. Music:
Instrumental/Band (2,400 SF Built in risers)
Choral (1,300 SF)
6. Special Education:
Resource Specialist (RSP 720 SF – or 1 CR)
Speech and Language classroom (250 SF - or ½ CR)
Special Day Class (SDC)

II. Library / Media Center: (4 SF / Student)

Reading Room, Stacks, Reference Area, Charging Area, Media Production, Office, Workroom, Quiet Study, A.V. Storage large enough for textbooks, automated library and textbook system, computer search stations with Internet access, Broadcast Center, LCD projection system

III. Administration (3.3 SF / Student)

Program:

Secretarial core, Public and Student Waiting, Principal's Office / Toilet, Vice-Principal's Office, Psychologist/Counseling, Nurse (desk, records cabinet) / Toilet, Cot Room (2),

works
dk
g

MODEL SCHOOL STUDY

HIGH SCHOOL 9 – 12

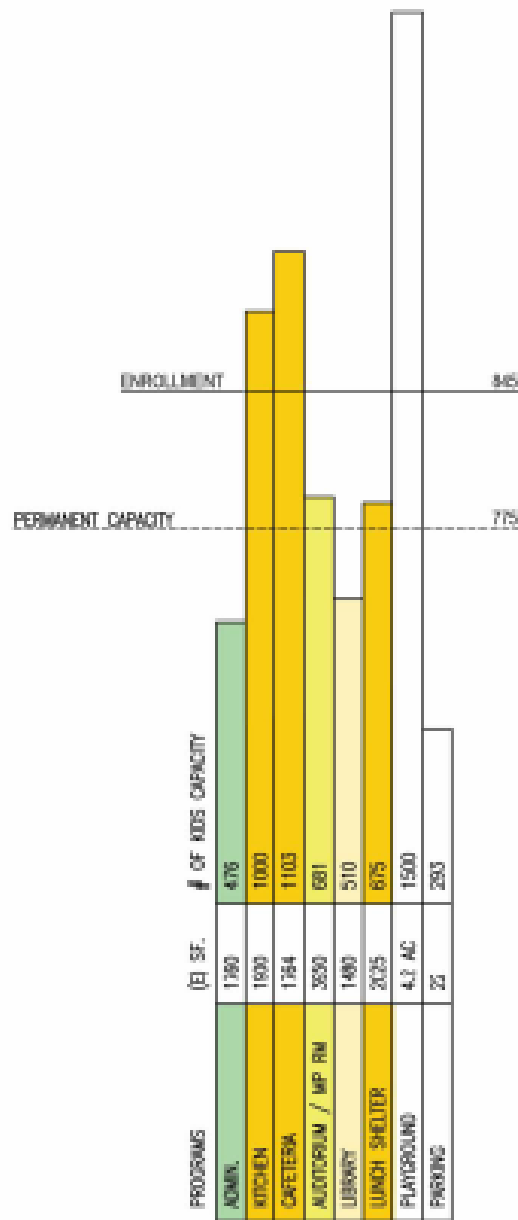
ENROLLMENT RANGE	:	1,500 – 2,000
LOADING	:	27- 32 / CR
WALKING DISTANCE	:	3.0-MILE RADIUS

I. Instructional Facilities:

1. General Classrooms (960 SF/each):
Small group areas - Teacher's workrooms / Storage
2. Art Classrooms:
Arts / Crafts / Ceramics (1,500 SF each)
Photography / Video (2,200 SF)
Drafting / Graphic / Drafting Computer Lab (1,500 SF)
Teacher's Workroom (400 SF)
3. Industrial Arts:
Auto Shop (8,000 SF)
General Shop: Wood/Metal (3,000 SF)
Teachers Workroom (400 SF)
4. Science Labs:
General Science Labs (1,440 SF each)
Prep/Storage/Computer (200 SF)
Biology Lab (1,440 SF)
Chemistry Lab (1,440 SF)
Prep/Storage (200 SF)
3. Computer / Business:
Computer Labs (1,200 SF each)
Vocational / Business Lab (1,200 SF)
Storage (200 SF)
6. Homemaking Classrooms:
Food Prep (2,000 SF)
All Purpose (2,000 SF)
Workroom (250 SF)
7. Foreign Language Lab (960 SF)
8. Performing Arts (Auditorium):
Instrumental / Band (3,500 SF)
Practice rooms, office
Choral (1,300 SF)
Practice room, office
Theater / Stage (600 to 900 seats)
9. Agriculture (1,500 SF)
Classroom, Lab, Greenhouse, Animal Shelter

works
dkk
g

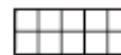
SITE UTILIZATION ASSESSMENT



SCHOOL FACILITY LEGEND



PORTABLE



REASSIGNED TEACHING SPACE

TEACHING SPACES

1

CLASSROOM

2

KINDERGARTEN

3

LAB

4

SHARED ED

5

PE

SHARED SUPPORT

6

LIBRARY

7

MULTI-PURPOSE

8

FOOD SERVICE

9

TOILET

10

WORKROOM, ETC.

CENTRAL ADMINISTRATION

11

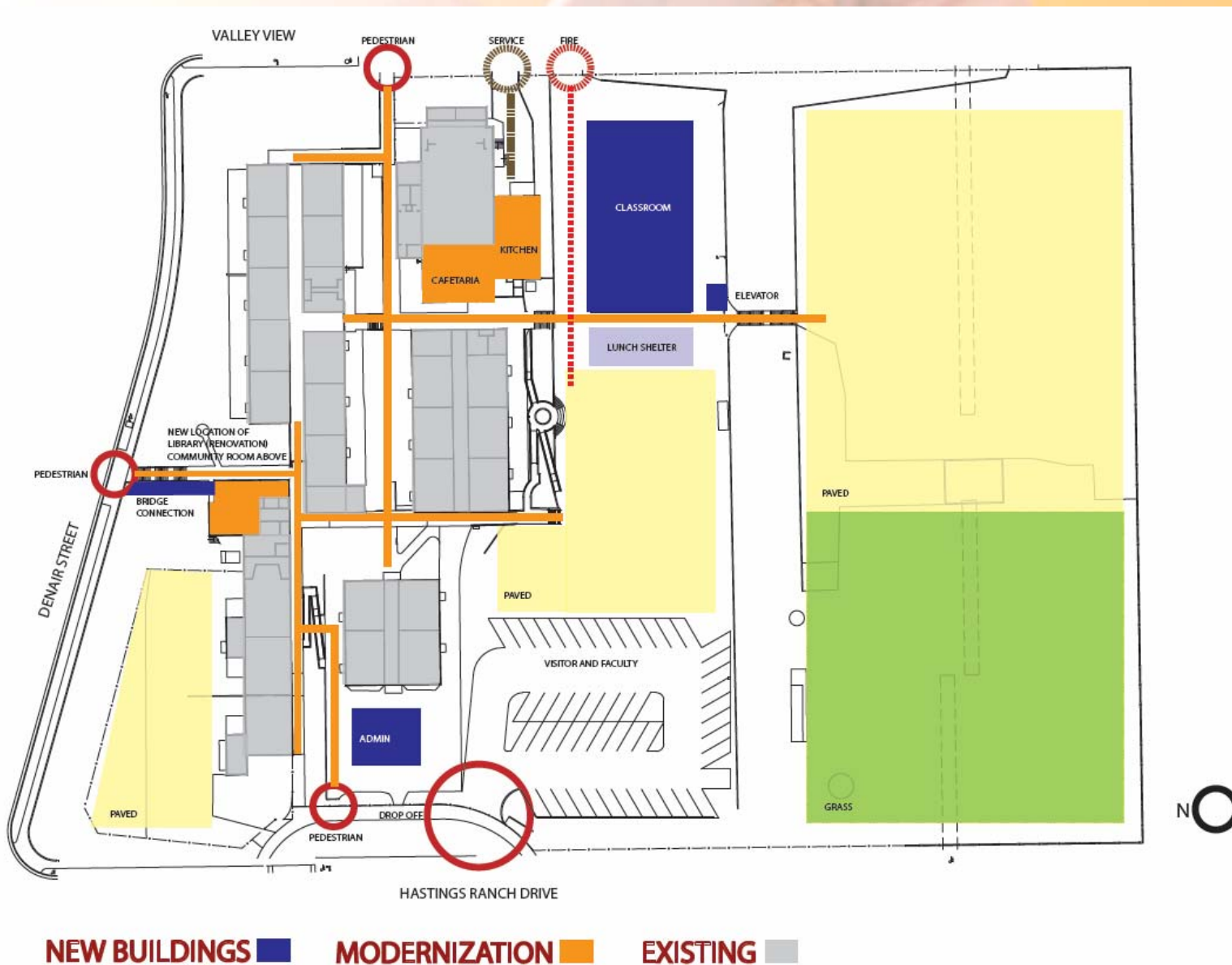
CENTRAL ADMIN.

12

MAINTAIN & OPERATION

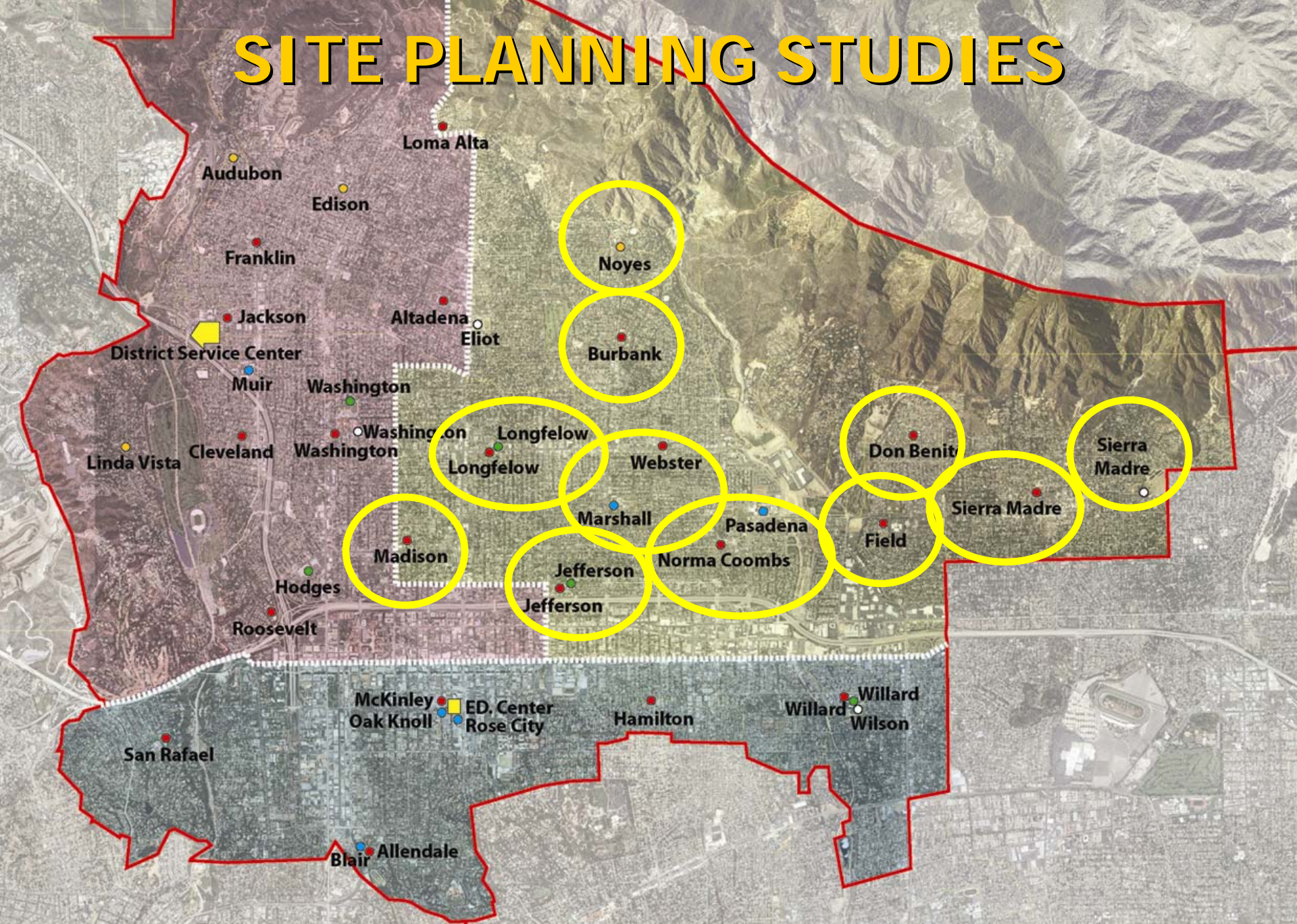
dkworks

SITE CIRCULATION STUDY



gkworks

SITE PLANNING STUDIES



ELEMENTARY SCHOOL	MIDDLE SCHOOL	HIGH SCHOOL	CHARTER SCHOOL	CHILDREN CENTER
-------------------	---------------	-------------	----------------	-----------------

Burbank Elementary School

2046 N Allen Avenue, Altadena, CA 91001



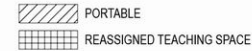
Principal:	Dr. Kelly Lawson
Grade Levels:	Preschool, Kindergarten through 6 th Grade
Enrollment:	Current: 383
Current Capacity:	18 Permanent Classrooms 6 Modular Classrooms
Recent Projects:	Measure Y Phase 1 Scope Including Quick Start Projects Budget \$5.1M, Completed 2002
School Program:	Burbank's educational efforts are strongly supported by the "STAR" program. Developed to promote an effective learning environment at Burbank School, the program's goals are to improve student achievement, raise self-esteem, improve staff morale, teach self discipline, and provide a safe and productive school climate. Unique programs include bilingual classes, special education/inclusion classes, gifted cluster classes.

gkworks



SITE SIZE(ACRES) : 4.80

SCHOOL FACILITY LEGEND



TEACHING SPACES

- 1 CLASSROOM
- 2 KINDERGARTEN
- 3 LAB
- 4 SHARED ED
- 5 PE

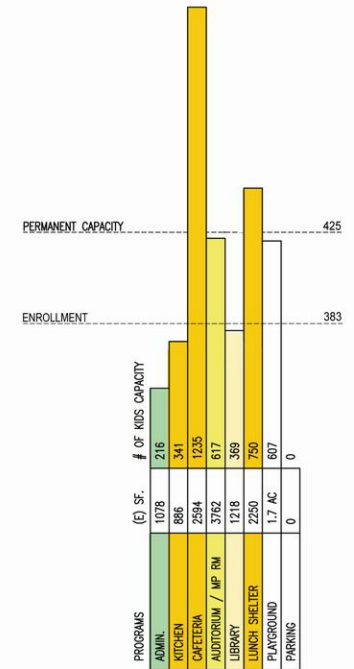
SHARED SUPPORT

- 6 LIBRARY
- 7 MULTI-PURPOSE
- 8 FOOD SERVICE
- 9 TOILET
- 10 WORKROOM, ETC.

CENTRAL ADMIN.

- 11 CENTRAL ADMIN.
- 12 MAINTAIN & OPERATION

ENROLLMENT AND CAPACITY INFORMATION





AERIAL PHOTO

SITE SIZE (ACRES): 4.80



MODERNIZATION

- 1 CAFETERIA/KITCHEN
- 2 MULTIPURPOSE ROOM

NEW CONSTRUCTION/ RECONSTRUCTION

- 3 PERMANENT SIX CLASSROOM BUILDING
TO REPLACE PORTABLES**

SITE DEVELOPMENT

- 4 EXTENDED PARKING
- 5 EXTENDED FIELD

SCHOOL: **BURBANK ES** IMMEDIATE NEEDS:

- A. MODERNIZE CAFETERIA AND KITCHEN.
- B. ELECTRICAL ROOM AND LUNCH SHELTER REQUIRE SEISMIC EVALUATION.
- C. REPLACE OLD ELECTRICAL PANEL WITH NEW;
PROVIDE NEW BRAKER WITH INCREASED CAPACITY.
- D. REPLACE INTERIOR LIGHTING WITH NEW HIGH
EFFICIENCY SYSTEM.
- E. REPLACE PLUMBING FIXTURES AND DRINKING
FOUNTAIN WITH NEW ADA COMPLIANT FIXTURES.
- F. SEPARATE DOMESTIC, FIRE, AND IRRIGATION
WATER METERS.

Don Benito Fundamental School

3700 Denair Street, Pasadena, CA 91107



Principal: Victoria Rueda

Grade Levels: Kindergarten through 6th Grade

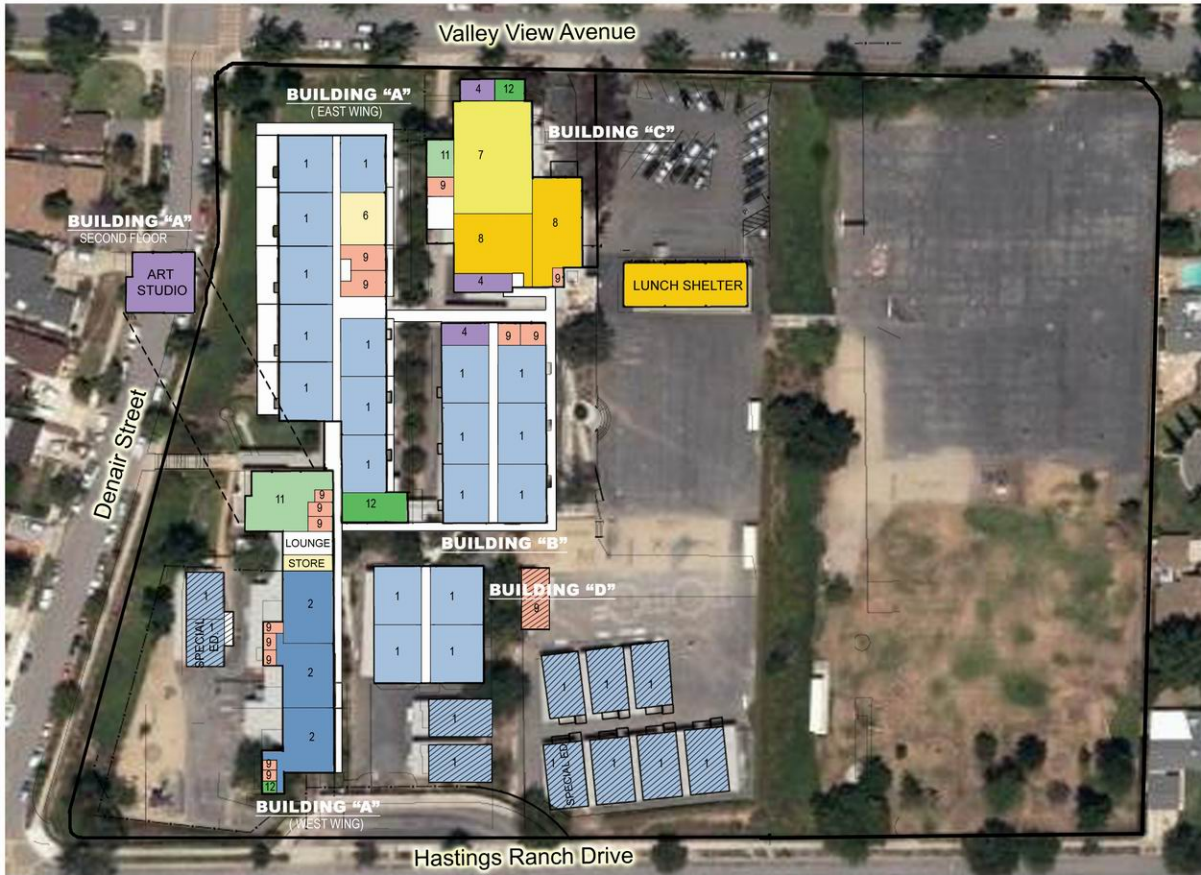
Enrollment: Current: 808

Current Capacity: 23 Permanent Classrooms
12 Modular Classrooms

Recent Projects: Measure Y Phase 1 Scope Including Quick Start Projects
Budget \$3.7M, Completed 2004

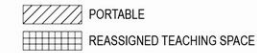
School Program: As a fundamental school, Don Benito embraces a more traditional approach to learning. We believe in the importance of a skill-based curriculum but also realize that these skills must engage students in purposeful activities which allow them to create meaning for themselves. Unique programs to the site include Pasadena Parks and Rec after school program, YMCA Recreation program, Special Education, Gardening, Choir and Music, Math Club and the Young Writers workshop.

gkworks



SITE SIZE(ACRES) : 8.90

SCHOOL FACILITY LEGEND



TEACHING SPACES

- 1 CLASSROOM
- 2 KINDERGARTEN
- 3 LAB
- 4 SHARED ED
- 5 PE

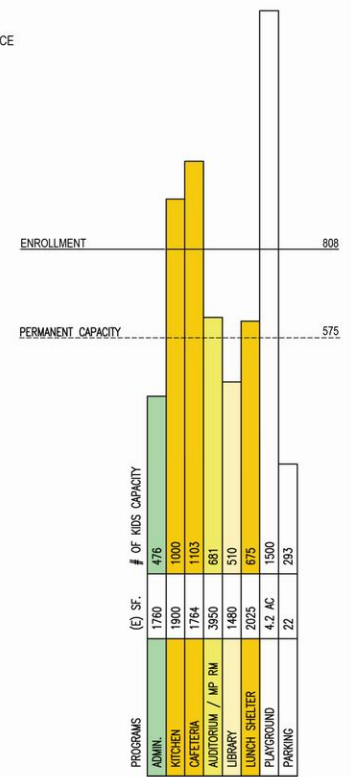
SHARED SUPPORT

- 6 LIBRARY
- 7 MULTI-PURPOSE
- 8 FOOD SERVICE
- 9 TOILET
- 10 WORKROOM, ETC.

CENTRAL ADMIN.

- 11 CENTRAL ADMIN.
- 12 MAINTAIN & OPERATION

ENROLLMENT AND CAPACITY INFORMATION





SITE SIZE (ACRES): 8.90

MODERNIZATION

- 1 COMMUNITY ROOM WITH BRIDGE
- 2 LIBRARY (GROUND FLOOR)
- 3 CLASSROOM
- 4 CAFETERIA / KITCHEN / MULTI-PURPOSE ROOM

NEW CONSTRUCTION/ RECONSTRUCTION

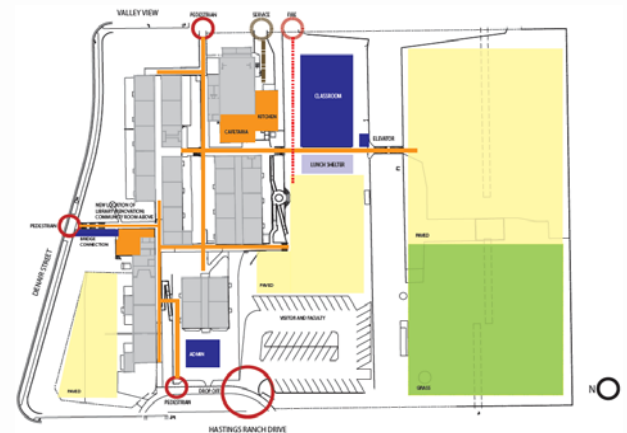
- 5 CLASSROOM BUILDING (SEVEN CLASSROOMS)
- 6 ADMINISTRATION
- 7 ELEVATOR WITH BRIDGE
- 8 COMMUNITY BRIDGE

SITE DEVELOPMENT

- 9 DROP-OFF WITH FACULTY PARKING
- 10 FACULTY PARKING
- 11 RESURFACE KINDERGARTEN PLAYGROUND PROVIDE SHADE STRUCTURE
- 12 RESURFACE PLAYGROUND
- 13 LUNCH SHELTER
- 14 SHADE STRUCTURE



AERIAL PHOTO



NEW BUILDINGS MODERNIZATION EXISTING
DON BENITO FUNDAMENTAL SCHOOL (K-6)

SCHOOL: **DON BENITO ES** IMMEDIATE NEEDS:

- A. MODERNIZATION OF CAFETERIA/MULTI-PURPOSE ROOM AND KITCHEN, INCLUDING CONSTRUCTION OF NEW LUNCH SHELTER.
- B. SEPARATE DOMESTIC, FIRE AND IRRIGATION WATER METERS.
- C. SCHOOL ENTRY TO ADMINISTRATION BLDG. IS NOT ADA ACCESSBLE. RELOCATE ADMINISTRATION TO NEW SITE ADJACENT TO DROP-OFF, ON HASTINGS RANCH DR.
- D. PROVIDE SHADE STRUCTURES AT PLAYGROUND AND PICK-UP AREAS.

Eugene Field Elementary School

3600 East Sierra Madre Boulevard, Pasadena, CA 91107



Principal:	Ana Maria Apodaca
Grade Levels:	Kindergarten and 1st through 6 th Grade
Enrollment:	Current: 358
Current Capacity:	23 Permanent Classrooms 6 Modular Classrooms
Recent Projects:	Measure Y Phase 1 Scope Including Quick Start Projects Budget \$3.7M, Completed 2004
School Program:	Field Elementary operates a Discipline program that affords student opportunities to learn Self-Discipline through a system of consistent rewards and consequences for their behavior. Educational programs at the site include Special Education and extracurricular clubs including Black History Bee, Dr. Martin Luther King, Jr. Essay and Poster Contest, Student Body Council, DARE, LEARNS, the Parks and Rec Enrichment program and more.

gkworks



SITE SIZE(ACRES) : 6.80

SCHOOL FACILITY LEGEND

- PORTABLE
- REASSIGNED TEACHING SPACE

TEACHING SPACES

- 1 CLASSROOM
- 2 KINDERGARTEN
- 3 LAB
- 4 SHARED ED
- 5 PE

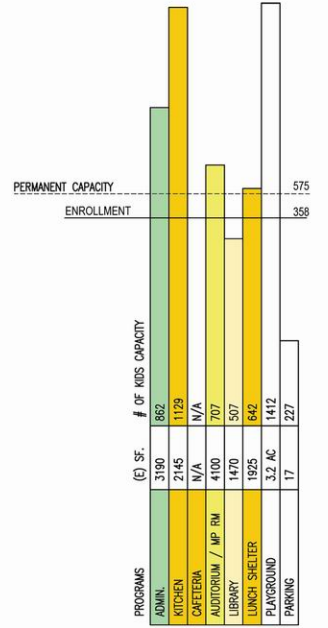
SHARED SUPPORT

- 6 LIBRARY
- 7 MULTI-PURPOSE
- 8 FOOD SERVICE
- 9 TOILET
- 10 WORKROOM, ETC.

CENTRAL ADMIN.

- 11 CENTRAL ADMIN.
- 12 MAINTAIN & OPERATION

ENROLLMENT AND CAPACITY INFORMATION





SITE SIZE (ACRES): 6.8



AERIAL PHOTO

MODERNIZATION

NEW CONSTRUCTION/ RECONSTRUCTION

SITE DEVELOPMENT

1

MULTI-PURPOSE / CAFETERIA /
KITCHEN

NONE

NONE

- A. MODERNIZATION OF CAFETERIA / KITCHEN AND MULTI-PURPOSE ROOM.
- B. PROVIDE NEW FIRE SPRINKLER SYSTEM IN ALL BUILDINGS.
- C. REPLACE OLD ELECTRIC PANEL BOARDS AT MULTI-PURPOSE ROOM BLDG. WITH ADEQUATE BRANCH BREAKER WITH INCREASED CAPACITY.
- D. PROVIDE NEW ADA DRINKING FOUNTAINS AT THE PLAYGROUND AND BUILDING EXTERIORS. ADJUST DRINKING FOUNTAIN AT PRE-K AND K PLAYGROUNDS TO PROPER HEIGHT STANDARDS.
- E. REPLACE OLD OR NON-COMPLIANT PLUMBING FIXTURES IN CLASSROOMS AND RESTROOMS WHERE NEEDED.
- F. SEPARATE DOMESTIC, FIRE AND IRRIGATION WATER METERS.
- G. PROVIDE NEW SHADE STRUCTURES ON PLAYGROUNDS.
- H. CONNECT MAIN P A SYSTEM TO THE PRE-K.

Thomas Jefferson Elementary School

1500 East Villa Street, Pasadena CA 91106



Principal:	Hoori Chalian
Grade Levels:	Kindergarten and 1st through 5 th Grade
Enrollment:	Current: 642 Projected: To Be Determined
Current Capacity:	38 Permanent Classrooms 7 Modular Classrooms
Recent Projects:	Measure Y Phase 1 Scope Including Quick Start Projects Budget \$7.7M, Completed 2003
School Program:	<p>The schools goals are "to acquire unity through cooperation, understanding, and communication...achieving this through a thinking meaning centered curriculum which integrates the core curriculum through: Respecting Myself, My Community, and My World."</p> <p>Jefferson ES has a strong bilingual education program providing Spanish instruction to students requiring those services. GATE students are actively involved in the Odyssey of the Mind Program.</p>

gkworks

Jefferson Children's Center

391 North Sierra Bonita Avenue, Pasadena, CA 91106



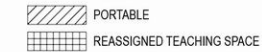
Grade Levels:	Preschool
Enrollment:	Current: Unknown Projected: To Be Determined
Current Capacity:	4 Permanent Classrooms 0 Modular Classrooms
Recent Projects:	NA
School Program:	Special Education Preschool, including Adaptive Physical Education

gkworks



SITE SIZE (ACRES) : 6.00

SCHOOL FACILITY LEGEND



TEACHING SPACES

- 1 CLASSROOM
- 2 KINDERGARTEN
- 3 LAB
- 4 SHARED ED
- 5 PE

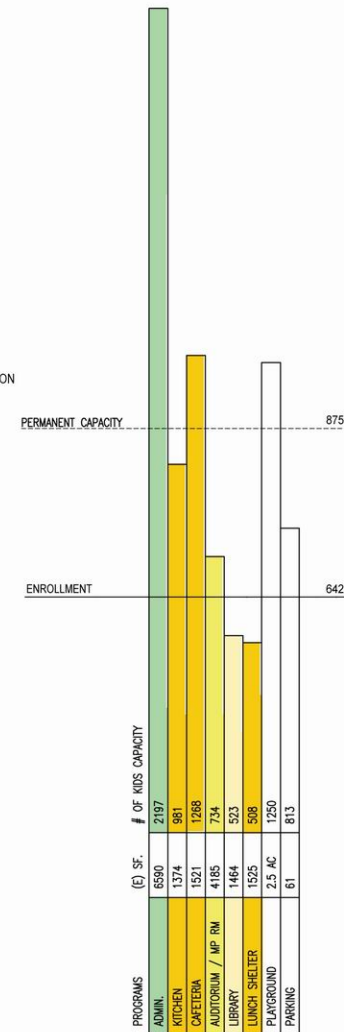
SHARED SUPPORT

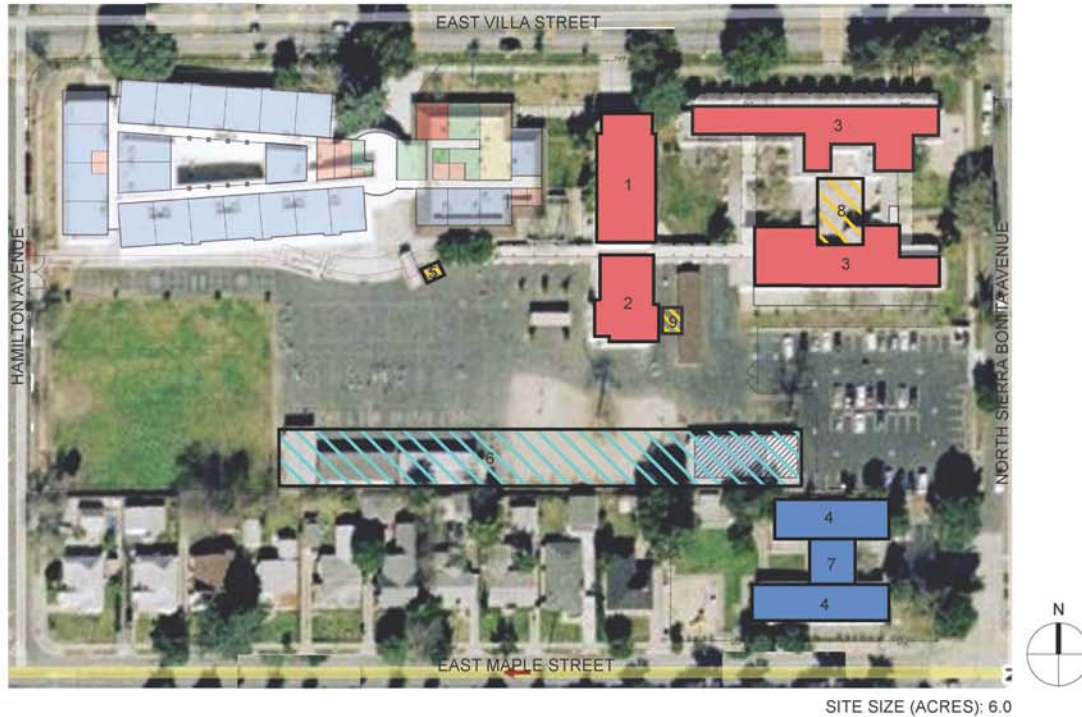
- 6 LIBRARY
- 7 MULTI-PURPOSE
- 8 FOOD SERVICE
- 9 TOILET
- 10 WORKROOM, ETC.

CENTRAL ADMIN.

- 11 CENTRAL ADMIN.
- 12 MAINTAIN & OPERATION

ENROLLMENT AND CAPACITY INFORMATION





AERIAL PHOTO

MODERNIZATION

- 1 AUDITORIUM
- 2 CAFETERIA / KITCHEN
- 3 BUILDINGS D & E

NEW CONSTRUCTION/ RECONSTRUCTION

- 4 NEW PRE-K BUILDING
- 5 NEW BASEMENT LOADING LIFT

SITE DEVELOPMENT

- 6 RESURFACE PLAYGROUND
- 7 REGRADE PRE-K PLAYGROUND
NEW SHADE STRUCTURE
- 8 REGRADE K-PLAYGROUND AND
PROVIDE NEW RUBBER MAT
- 9 PROVIDE COVER FROM
CAFETERIA TO LUNCH SHELTER

SCHOOL: **JEFFERSON ES** IMMEDIATE NEEDS:

- A. MODERNIZE CAFETERIA/KITCHEN AND AUDITORIUM.
- B. REPLACE VENTILATION/EXHAUST SYSTEM AT BLDG. 'B' AND 'C' WITH A NEW CENTRAL AIR SYSTEM.
- C. REPLACE OLD ELECTRIC PANELBOARDS AT BLDGS. 'C', 'D', 'E' AND 'U' WITH ADEQUATE BRANCH BREAKER WITH INCREASED CAPACITY.
- D. REPLACE CLASSROOM SINKS AND EXTERIOR DRINKING FOUNTAINS WITH ADA FEATURES.
- E. REPLACE CHILDREN'S CENTER PORTABLE BUILDINGS WITH NEW OR PERMANENT BUILDINGS. REGRADE CENTER'S PLAYGROUND AND PROVIDE SHADE STRUCTURE.
- F. REPLACE PLUMBING IN BUILDING 'D' RESTROOMS. PROVIDE BOOSTER PUMP.

- G. SAFETY FEATURE: PROVIDE RAILING AT TOP OF AMPHITHEATER BETWEEN STAIR WELLS, ALLOWING SEPARATION FOR SITING AT TOP TIER.
- H. SEPARATE DOMESTIC/FIRE/IRRIGATION METERS.
- I. REDISTRIBUTE SPACE ALLOCATION TO ACCOMMODATE MINIMUM K-GRADE STANDARDS WITH ADEQUATE RESTROOMS.
- J. CORRECT PHONE SYSTEM; CONNECT WIRELESS ACCESS TO INTERNET; CHANGE CLASSROOM HARDWARE TO BE ABLE TO LOCK DOORS FROM INSIDE.
- K. ACCOMMODATE MINIMUM K-GRADE STANDARDS WITH ADEQUATE, DEDICATED RESTROOMS.
- L. REPLACE LIGHTING AT BUILDINGS 'C', 'E' AND 'U' WITH HIGH-EFFICIENCY LIGHTING.
- M. CONNECT P.A. SYSTEM TO ALL BUILDINGS ON CAMPUS, INCLUDING PORTABLES.

Henry W Longfellow Elementary School

1065 E Washington Boulevard, Pasadena CA 91104



Principal:	Erica Ingber
Grade Levels:	Kindergarten and 1st through 6 th Grade
Enrollment:	Current: 587
Current Capacity:	36 Permanent Classrooms 0 Modular Classrooms
Recent Projects:	Measure Y Phase 1 Scope Including Quick Start Projects Budget \$7.9M, Completed 2003
School Program:	Educational programs include Special Education and Parent Education including activities such as ESL and computer training.

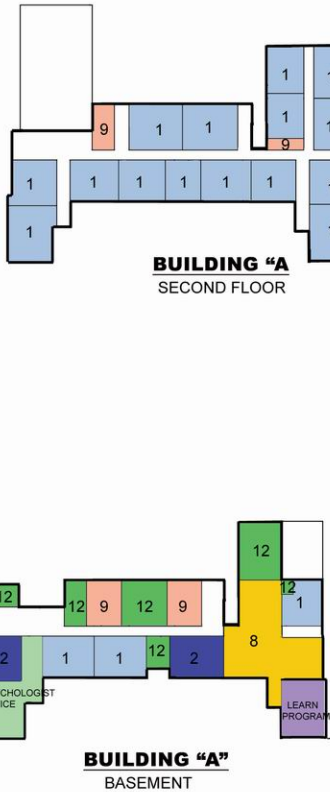
gkworks

Longfellow Children's Center

1377 North Mar Vista Ave., Pasadena, CA 91107



Grade Levels:	Preschool
Enrollment:	Current: Unknown Projected: To Be Determined
Current Capacity:	3 Permanent Classrooms 0 Modular Classrooms
Recent Projects:	NA
School Program:	Preschool aged child care.



SITE SIZE (ACRES) : 6.20

SCHOOL FACILITY LEGEND

- PORTABLE
- REASSIGNED TEACHING SPACE

TEACHING SPACES

- 1 CLASSROOM
- 2 KINDERGARTEN
- 3 LAB
- 4 SHARED ED
- 5 PE

SHARED SUPPORT ENROLLMENT AND CAPACITY INFORMATION

- 6 LIBRARY
- 7 MULTI-PURPOSE
- 8 FOOD SERVICE
- 9 TOILET
- 10 WORKROOM, ETC.

CENTRAL ADMIN.

- 11 CENTRAL ADMIN.
- 12 MAINTAIN & OPERATION



PERMANENT CAPACITY 850

ENROLLMENT 587

PROGRAMS	(C) ST.	# OF KIDS CAPACITY
ADMIN.	4049	1094
KITCHEN	1815	955
CAFETERIA	3314	2071
AUDITORIUM / MP RM	4100	707
LIBRARY	1480	514
LUNCH SHELTER	1185	385
PLAYGROUND	3.8 AC	1900
PARKING	.33	440



gkkworks

LONGFELLOW ELEMENTARY SCHOOL (K-6)
1065 E Washington Boulevard, Pasadena, CA 91104
EXISTING SITE PLAN

PUSD
Pasadena Unified School District



SITE SIZE (ACRES): 6.20



AERIAL PHOTO

MODERNIZATION

NEW CONSTRUCTION/ RECONSTRUCTION

SITE DEVELOPMENT

- 1 AUDITORIUM
- 2 CAFETERIA / KITCHEN
- 3 CHILDRENS CENTER AND PLAYGROUND

NONE

- 4 DROP-OFF & EXPANDED FACULTY PARKING
- 5 REPLACE RUBBER MAT
- 6 SHADE STRUCTURE

- A. MODERNIZATION OF CAFETERIA, KITCHEN, AND AUDITORIUM.
- B. REPLACE EXTERIOR DRINKING FOUNTAINS WITH ADA COMPLIANT FIXTURES.
- C. PROVIDE ADDITIONAL SHADE STRUCTURES AT PLAYGROUNDS.
- D. SEPARATE DOMESTIC/FIRE/IRRIGATION METERS.
- E. MODERNIZE CHILDRENS CENTER, INCLUDING PLAYGROUND AND PROVISION OF A SHADE STRUCTURE.

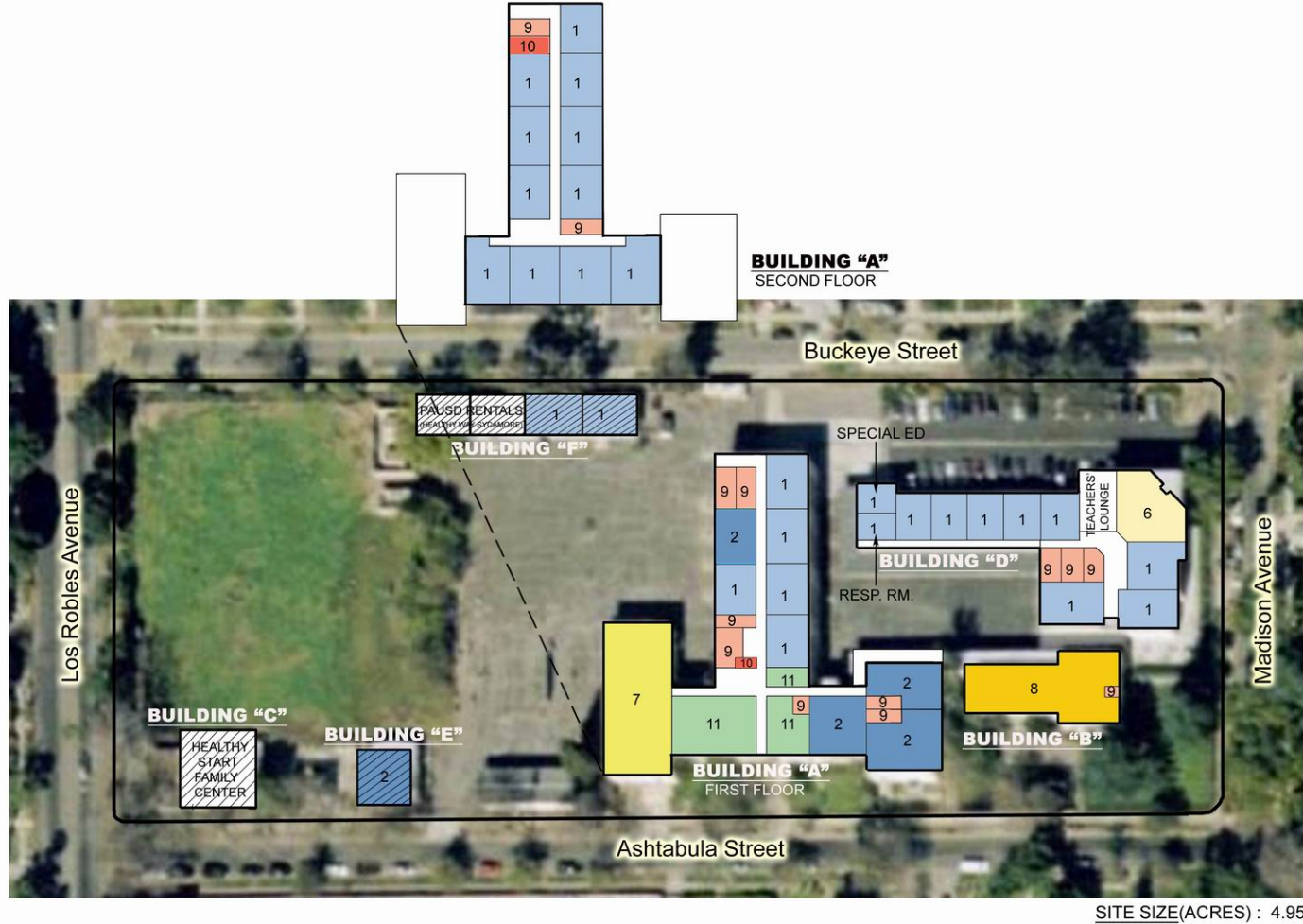
Madison Elementary School

515 Ashtabula, Pasadena CA 91004



Principal:	Sandra Macis
Grade Levels:	Pre-Kindergarten through 5 th Grade
Enrollment:	Current: 597
Current Capacity:	32 Permanent Classrooms 0 Modular Classrooms
Recent Projects:	Measure Y Phase 1 Scope Including Quick Start Projects
School Program:	<p>Madison ES's staff is dedicated to "providing an organized instructional program for all students which develops academic skills, builds self-esteem, and promotes conscientious citizenship."</p> <p>The school utilizes a modified Eastman Program to provide bilingual education in English, Spanish as well as working with ESL. Through this program, children become fluent in English in around three years.</p> <p>Other programs include Computer Curriculum Corporation CAI Lab, IBM Writing to Read Center, Instrumental Music Program, and Homework Center.</p>

gkworks



SCHOOL FACILITY LEGEND

- PORTABLE
- REASSIGNED TEACHING SPACE

TEACHING SPACES

- 1 CLASSROOM
- 2 KINDERGARTEN
- 3 LAB
- 4 SHARED ED
- 5 PE

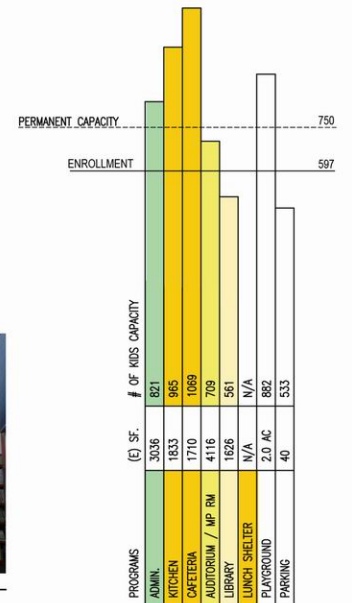
SHARED SUPPORT

- 6 LIBRARY
- 7 MULTI-PURPOSE
- 8 FOOD SERVICE
- 9 TOILET
- 10 WORKROOM, ETC.

CENTRAL ADMIN.

- 11 CENTRAL ADMIN.
- 12 MAINTAIN & OPERATION

ENROLLMENT AND CAPACITY INFORMATION





AERIAL PHOTO

MODERNIZATION

- 1 KINDERGARTEN CLASSROOM
- 2 CLASSROOM
- 3 CAFETERIA / KITCHEN
- 4 AUDITORIUM

NEW CONSTRUCTION/ RECONSTRUCTION

- 5 REPLACE WITH NEW PERMANENT BUILDINGS

SITE DEVELOPMENT

- 6 NEW LANDSCAPE
- 7 NEW DROP-OFF
- 8 NEW SERVICE YARD WITH TRASH
- 9 NEW PRE-K PLAYGROUND

SCHOOL: **MADISON ES**

IMMEDIATE NEEDS:

- A. RESTORE AUDITORIUM TO ITS HISTORICAL PROMINENCE; MAKE IT ACCESSIBLE TO COMMUNITY BY REMODELING ITS MAIN ENTRANCE.
- B. MODERNIZE CAFETERIA AND KITCHEN, AND PROVIDE A LUNCH SHELTER NEAR CAFETERIA. PROVIDE VENTILATION OR AIR CONDITION TO KITCHEN, CAFETERIA AND M.P. ROOM AREAS.
- C. PROVIDE 2ND TRASH ENCLOSURE ON SITE IN PROXIMITY TO KITCHEN/CAFETERIA. CREATE NEW DELIVERY DRIVEWAY TO INCLUDE NEW TRASH BIN AREA AT MADISON AVE.
- D. SEPARATE DOMESTIC/FIRE/IRRIGATION METERS.
- E. PROVIDE SHADE SHELTERS IN PLAYGROUNDS.
- F. PROVIDE K PLAYGROUND ON SOUTH SIDE WITH SHADE STRUCTURE.

- G. SAFETY ISSUE: CREATE DRIVEWAY LOOP FOR DROP-OFF AND PICK-UP AT NORTH END OF CAMPUS.
- H. PROVIDE ADA ACCESS TO STAGE.
- I. PROVIDE ADA DRINKING FOUNTAINS AT EXTERIOR AREAS.
- J. REPLACE OLD ELECTRIC PANELBOARDS AND LIGHTING AT THE BASEMENT OF BUILDING A WITH ADEQUATE BRANCH BREAKER WITH INCREASED CAPACITY.
- K. REPLACE PLUMBING FIXTURE AT KITCHEN AND MOST REST ROOMS.
- L. PROVIDE VENTILATION TO LIBRARY SPACE BETWEEN CEILING AND ROOF TO PREVENT BUILT-UP CONDENSATION AND EVENTUAL WATER LEAKS.

Norma Coombs Alternative School

2600 Paloma Street, Pasadena, CA 91107



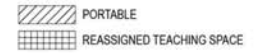
Principal:	Dr. Vanessa Watkins
Year Built:	1941 (As Hale Elementary School)
Grade Levels:	Kindergarten through 8 th Grade
Enrollment:	Current: 577
Current Capacity:	22 Permanent Classrooms 5 Modular Classrooms
Recent Projects:	Measure Y Phase 0 and 1 Scope Including Quick Start Projects Budget \$5.1M, Completed 2001
School Program:	<p>The mission of Norma Coombs is “to provide a quality education for all learners in order to develop ethical members of a civil society.”</p> <p>Programs for students at Norma Coombs include G.A.T.E. for advanced learning opportunities, B.E.S.T. for after-school assistance with studies, and two Special Education programs: RSP and Special Day Classes.</p>

gkworks



SITE SIZE (ACRES) : 5.30

SCHOOL FACILITY LEGEND



TEACHING SPACES

- 1 CLASSROOM
- 2 KINDERGARTEN
- 3 LAB
- 4 SHARED ED
- 5 PE

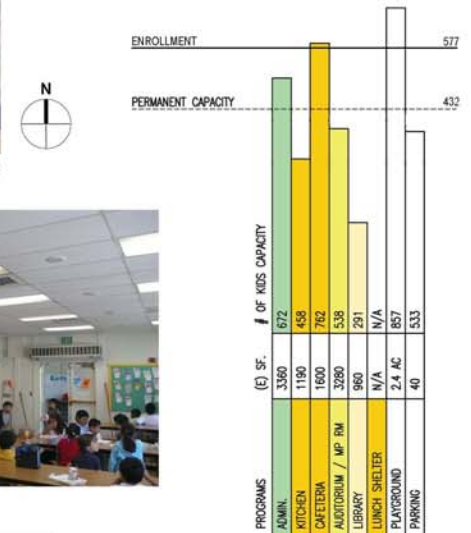
SHARED SUPPORT

- 6 LIBRARY
- 7 MULTI-PURPOSE
- 8 FOOD SERVICE
- 9 TOILET
- 10 WORKROOM, ETC.

CENTRAL ADMIN.

- 11 CENTRAL ADMIN.
- 12 MAINTAIN & OPERATION

ENROLLMENT AND CAPACITY INFORMATION





SITE SIZE (ACRES): 5.30



AERIAL PHOTO

MODERNIZATION

NEW CONSTRUCTION/ RECONSTRUCTION

SITE DEVELOPMENT

- 1 KINDERGARTEN
- 2 CLASSROOM
- 3 AUDITORIUM

- 4 ADMINISTRATION / CLASSROOM BUILDING

- 5 NEW PLAYGROUND
- 6 NEW TURF AREA
- 7 NEW ENTRY QUAD TO ADMIN. / CLASSROOM BUILDING
- 8 SHADE STRUCTURE
- 9 REMOVE PORTABLES

SCHOOL: **NORMA-COMBS AS** IMMEDIATE NEEDS:

- A. PROVIDE NEW FIRE ALARM DEVICES AS NEEDED THROUGHOUT THE PERMANENT CAMPUS BUILDING.
- B. MAKE EAST SIDE OF CAMPUS ADA COMPLIANT.
- C. UPGRADE THE EMS CONTROLS FOR THE HEATING AND COOLING SYSTEMS ON CAMPUS.
- D. REPLACE OLD ELECTRIC PANEL BOARDS AND LIGHTING AT THE CAFETERIA AND AUDITORIUM WITH ADEQUATE BRANCH BREAKER WITH INCREASED CAPACITY AND NEW ENERGY EFFICIENCY LIGHT FIXTURES.
- E. NEW RAMPS AND ACCESSIBLE PATHS TO THE SCHOOL BUILDINGS AT THE LOWER PLAYGROUND.
- F. REPLACE PLUMBING FIXTURES AT RESTROOM.

- G. REPLACE EXISTING CHAIR LIFT AT THE EXTERIOR HALLWAY.
- H. PROVIDE RESTROOM TO K BUILDING ON NORTH SIDE OF SCHOOL.
- I. PROVIDE ADDITIONAL SHADE STRUCTURE AT PLAYGROUND AREA.
- J. REPLACE EXTERIOR DRINKING FOUNTAINS WITH ACCESSIBLE FIXTURES.
- K. REPLACE CONTROLS FOR EXTERIOR LIGHTING THROUGHOUT CAMPUS.
- L. SEPARATE DOMESTIC/FIRE/IRRIGATION METERS.
- M. MODERNIZE THE AUDITORIUM, INCLUDING HVAC SYSTEM.
- N. PROVIDE P.A. SYSTEM THROUGHOUT SCHOOL.

Noyes Elementary School

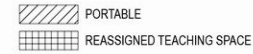
1919 East Pinecrest Drive, Altadena, 91001



Principal:	N/A
Grade Levels:	N/A
Enrollment:	Current: N/A Projected: NA
Current Capacity:	15 Permanent Classrooms 4 Modular Classrooms
Recent Projects:	Measure Y Phase 1 Scope Including Quick Start Projects Budget \$4.5M, Completed 2003
School Program:	Currently leased to Aveson Charter School. Noyes has been identified as a potential surplus site.



SCHOOL FACILITY LEGEND



TEACHING SPACES

- 1 CLASSROOM
- 2 KINDERGARTEN
- 3 LAB
- 4 SHARED ED
- 5 PE

SHARED SUPPORT

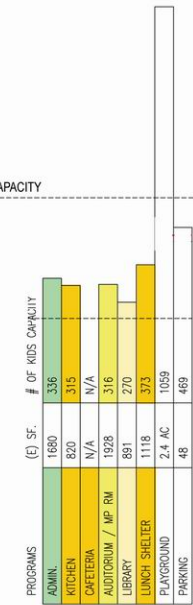
- 6 LIBRARY
- 7 MULTI-PURPOSE
- 8 FOOD SERVICE
- 9 TOILET
- 10 WORKROOM, ETC.

CENTRAL ADMIN.

- 11 CENTRAL ADMIN.
- 12 MAINTAIN & OPERATION

ENROLLMENT AND CAPACITY INFORMATION

PERMANENT CAPACITY 550



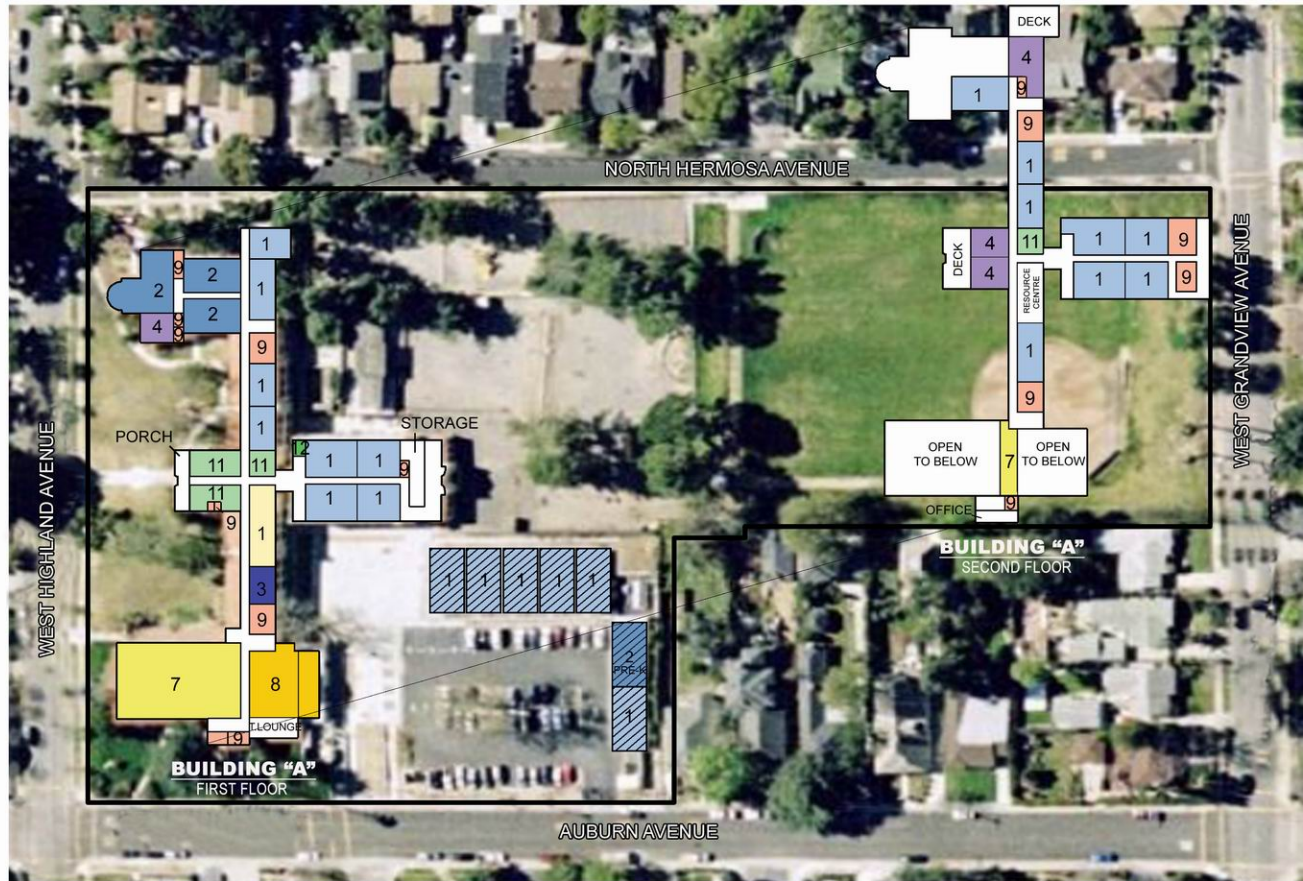
Sierra Madre Lower School

141 W. Highland Avenue, Sierra Madre CA 91024



Principal:	Gayle Bluemel
Grade Levels:	Kindergarten through 5th Grade
Enrollment:	Current: 628
Current Capacity:	24 Permanent Classrooms 6 Modular Classrooms
Recent Projects:	Measure Y Phase 1 Scope Including Quick Start Projects Budget \$8.5M, Completed 2003 (Shared with Sierra Madre Upper)
School Program:	Sierra Madre School's mission is "committed to providing a program which promotes academic, physical, emotional and social growth for all our students within a safe and secure environment. Our goal is that these endeavors will foster high student academic achievement and creative thinking among our students and staff, to work together in harmony with parents and the community for the good of all students."

gkworks



SITE SIZE(ACRES) : 6.71

SCHOOL FACILITY LEGEND

- PORTABLE
- REASSIGNED TEACHING SPACE

TEACHING SPACES

- 1 CLASSROOM
- 2 KINDERGARTEN
- 3 LAB
- 4 SHARED ED
- 5 PE

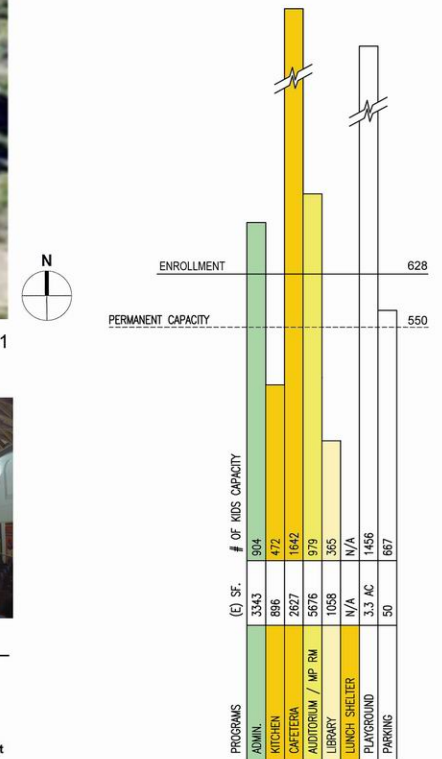
SHARED SUPPORT

- 6 LIBRARY
- 7 MULTI-PURPOSE
- 8 FOOD SERVICE
- 9 TOILET
- 10 WORKROOM, ETC.

CENTRAL ADMIN.

- 11 CENTRAL ADMIN.
- 12 MAINTAIN & OPERATION

ENROLLMENT AND CAPACITY INFORMATION





SITE SIZE (ACRES): 6.71



AERIAL PHOTO

MODERNIZATION

- 1 HVAC UPGRADE @ AUDITORIUM
MAIN BUILDING

NEW CONSTRUCTION/ RECONSTRUCTION

- 2 NEW FIELD TOILETS
- 3 NEW PRE-K AND
PLAYGROUND

SITE DEVELOPMENT

- 4 NEW LUNCH SHELTER
- 5 NEW LUNCH SHELTER

- A. RELOCATE PRE-K TO WEST SIDE OF CAMPUS, PROVIDING ADEQUATE RESTROOMS AND PLAGROUND SPACE.
- B. PROVIDE NEW LUNCH SHELTER ADJACENT TO CAFETERIA.
- C. MAKE EXTERIOR LEVELS ACCESSIBLE PER CURRENT ADA STANDARDS.
- D. PROVIDE SHADE STRUCTURES WHERE NEEDED.
- E. PROVIDE RESTROOM FACILITIES ON UPPER PLAYING FIELD (COORDINATE JOINT-USE WITH CITY).
- F. PROVIDE ADA COMPLIANT LANDINGS AT CLASSROOMS WITH RAISED FLOORS.
- G. SEPARATE DOMESTIC, FIRE, AND IRRIGATION WATER METERS.
- H. REPAIR BELL AND FIRE ALARM SYSTEM IN PORTABLE BUILDINGS. CONNECT P.A. TO THE 'P' BUILDINGS.
- I. UPGRADE HVAC SYSTEM IN AUDITORIUM AND WHERE NEEDED.
- J. UPGRADE AUDITORIUM LIGHTING AND SWITCH GEAR SYSTEM.
- K. IMPROVE DRAINAGE THROUGHOUT CAMPUS.

Sierra Madre Upper

160 N Canon Avenue Sierra Madre, CA 91024



Principal:	Gayle Bluemel
Grade Levels:	6 th through 8th Grade
Enrollment:	Current: 321
Current Capacity:	16 Permanent Classrooms 10 Modular Classrooms
Recent Projects:	Measure Y Phase 1 Scope Including Quick Start Projects Budget \$8.5M, Completed 2003 (Shared with Sierra Madre Lower)
School Program:	The Sierra Madre Schools are “committed to providing a program which promotes academic, physical, emotional and social growth for all our students within a safe and secure environment. Our goal is that these endeavors will foster high student academic achievement and creative thinking among our students and staff, to work together in harmony with parents and the community for the good of all students.”

gkworks



SITE SIZE(ACRES) : 8.02

SCHOOL FACILITY LEGEND

- PORTABLE
- REASSIGNED TEACHING SPACE

TEACHING SPACES

- 1 CLASSROOM
- 2 KINDERGARTEN
- 3 LAB
- 4 SHARED ED
- 5 PE

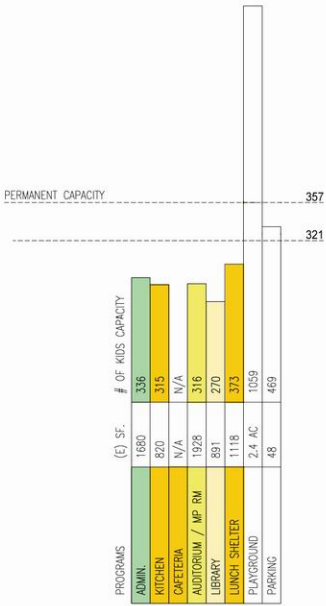
SHARED SUPPORT

- 6 LIBRARY
- 7 MULTI-PURPOSE
- 8 FOOD SERVICE
- 9 TOILET
- 10 WORKROOM, ETC.

CENTRAL ADMIN.

- 11 CENTRAL ADMIN.
- 12 MAINTAIN & OPERATION

ENROLLMENT AND CAPACITY INFORMATION





SITE SIZE (ACRES): 8.02

MODERNIZATION

1 CLASSROOM BUILDINGS

NEW CONSTRUCTION/ RECONSTRUCTION

- 2** ADMINISTRATION
- 3** GYMNASIUM/ LOCKER ROOM / CAFETERIA / KITCHEN
- 4** TWO CLASSROOMS
- 5** LIBRARY / COMPUTER LAB
- 6** CLASSROOM BUILDING

SITE DEVELOPMENT

- 7** NEW DROP-OFF/ FACULTY PARKING WITH FENCE / LIGHTING
- 8** RESURFACE PLAYGROUND / DRAINAGE / ADA COMPLIANCE
- 9** NEW ENTRY COURTYARD
- 10** NEW BLEACHERS



AERIAL PHOTO

SCHOOL: **SIERRA MADRE UPPER MS** IMMEDIATE NEEDS:

NOTE: THIS SCHOOL WAS NOT MODERNIZED UNDER MEASURE Y.

- A. CONSTRUCT NEW GYMNASIUM PER MIDDLE SCHOOL STANDARDS.
- B. RECONFIGURE SITE LAYOUT, UTILIZING WASTED SPACE WITH EFFICIENT PARKING DESIGN AND DROP-OFF/PICK-UP INTERIOR LOOP.
- C. UPGRADE ELECTRICAL SYSTEM THROUGHOUT.
- D. RECONSTRUCT DEFICIENT MULTI-PURPOSE ROOM, CAFETERIA AND KITCHEN. PROVIDE LUNCH SHELTER.
- E. REPLACE OLD PORTABLE BUILDINGS WITH NEW FIXED CLASSROOM STRUCTURES OR NEW PORTABLES.
- F. MODERNIZE OR RECONSTRUCT CLASSROOM, ADMINISTRATION, COMPUTER, AND LIBRARY BUILDINGS WITH CURRENT STATE-OF-THE-ART AMENITIES.
- G. MAKE ENTIRE SITE FULLY ADA COMPLIANT.

- H. IMPROVE EXTERNAL APPEARANCE OF ENTIRE CAMPUS; DEFINE MAIN ENTRANCE TO CAMPUS.
- I. RE-GRADE TO IMPROVE DRAINAGE AT AREAS PRONE TO FLOODING OR PUDDLING.
- J. REPLACE OR REPAIR WALL AC UNITS AT CLASSROOM BUILDINGS TO AVOID CONDENSATION RUN-OFF OVER MAIN PATH OF TRAVEL.
- K. PROVIDE NEW FIRE SPRINKLER SYSTEM THROUGHOUT CAMPUS.
- L. PROVIDE FIRE ALARM SYSTEM THROUGHOUT.
- M. SEPARATE DOMESTIC, FIRE AND IRRIGATION WATER METERS.
- N. REPLACE LIGHTING SYSTEMS IN BUILDINGS WITH NEW ENERGY EFFICIENT FIXTURES.
- O. REPLACE EXTERIOR LIGHTING AT MULTI-PURPOSE ROOM.

Daniel Webster Elementary School

2101 E. Washington Boulevard, Pasadena, CA 91104



Principal: Sharon J. Lefler

Grade Levels: Kindergarten through 8th Grade

Enrollment: Current: 580

Current Capacity: 27 Permanent Classrooms
4 Modular Classrooms

Recent Projects: Measure Y Phase 1 Scope Including Quick Start Projects
Budget \$5.7M, Completed 2002

School Program: The staff at Daniel Webster School believe a safe and quality educational atmosphere composed of powerful teaching and learning, must be provided to enable all students to succeed in school and life.

Special Programs include:

- Early Childhood Program
- Computer Assisted Instruction (4-5-6)
- Speech Language Therapy
- After School Recreation
- Instrumental Music
- Multilingual Education
- Writing To Read Computer Program (K-I)
- Movement Education
- Special Education
- After School Homework Assistance
- Library Program
- Project SEED

dkworks

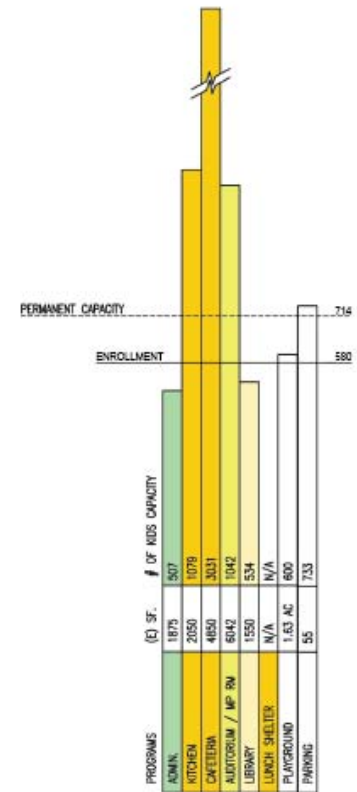


SITE SIZE (ACRES) : 4.80

SCHOOL FACILITY LEGEND

- PORTABLE
- REASSIGNED TEACHING SPACE
- TEACHING SPACES
 - 1 CLASSROOM
 - 2 KINDERGARTEN
 - 3 LAB
 - 4 SHARED ED
 - 5 PE
- SHARED SUPPORT
 - 6 LIBRARY
 - 7 MULTI-PURPOSE
 - 8 FOOD SERVICE
 - 9 TOILET
 - 10 WORKROOM, ETC.
- CENTRAL ADMIN.
 - 11 CENTRAL ADMIN.
 - 12 MAINTAIN & OPERATION

ENROLLMENT AND CAPACITY INFORMATION





SITE SIZE (ACRES): 4.80



AERIAL PHOTO



MODERNIZATION

NEW CONSTRUCTION/ RECONSTRUCTION

SITE DEVELOPMENT

- 1 CAFETERIA / KITCHEN (BASEMENT)
- 2 MULTIPURPOSE ROOM (FIRST FLOOR)

NONE

NONE

- A. MODERNIZE MAIN BUILDING'S ADMIN. AREA, CAFETERIA, KITCHEN, AND AUDITORIUM TO CURRENT ELECTRICAL, MECHANICAL, LIGHTING, ACOUSTICAL, TECHNOLOGICAL, AND INTERIOR FINISH STANDARDS.
- B. REPAIR BOILERS FOR HEATING OR PROVIDE NEW SYSTEM.
- C. SEPARATE DOMESTIC, FIRE AND IRRIGATION WATER METERS.
- D. REPLACE HALLWAY AND EXTERIOR DRINKING FOUNTAINS WITH ADA COMPLIANT FIXTURES.
- E. PROVIDE VENTILATION TO ELECTRICAL CLOSET IN ROOM 111.
- F. AT THE MAIN CLASSROOM BUILDING, REPLACE OLD ELECTRIC PANEL BOARDS WITH ADEQUATE BRANCH BREAKERS WITH INCREASED CAPACITY.

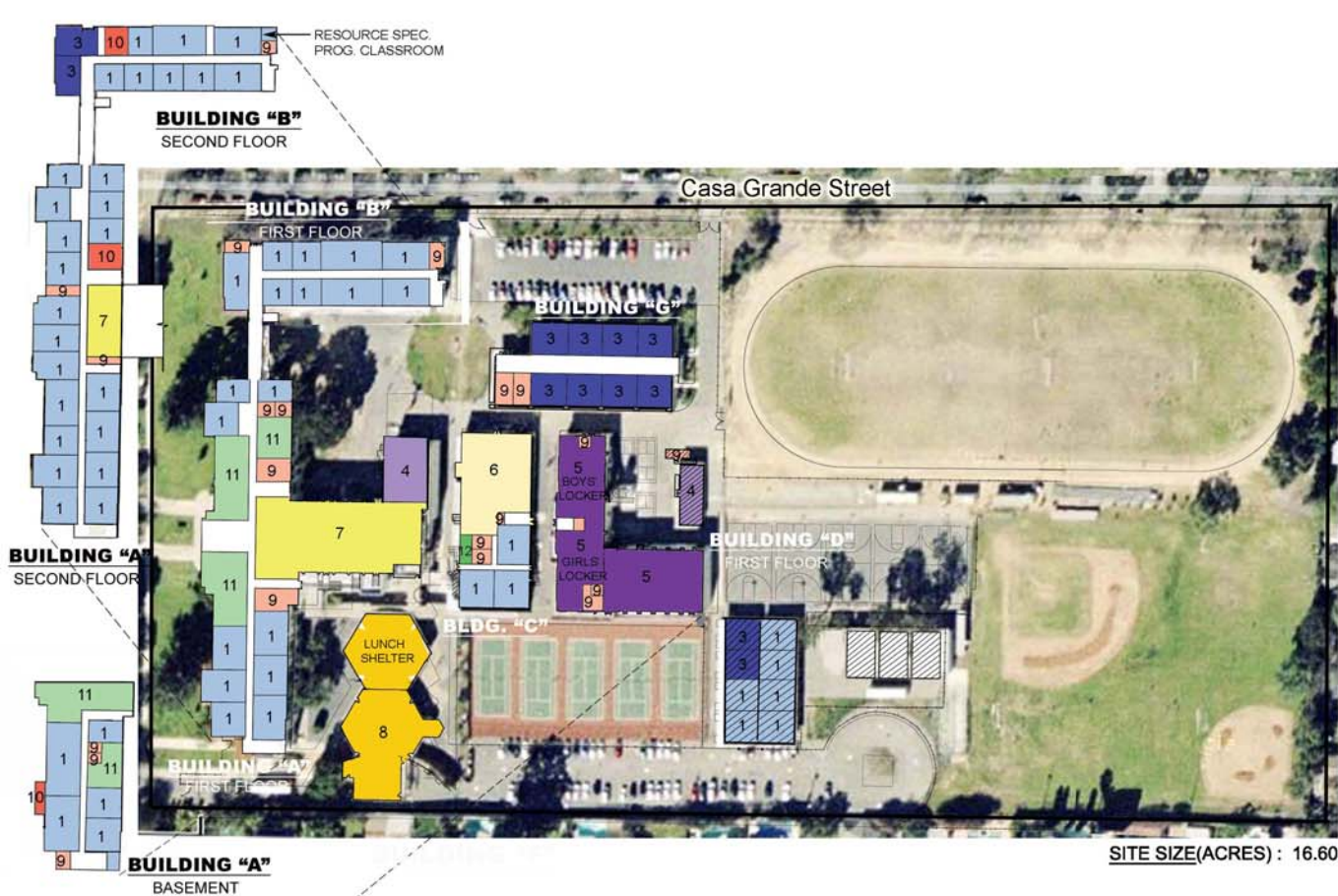
Marshall Fundamental Secondary School

990 N Allen Avenue, Pasadena CA 91104

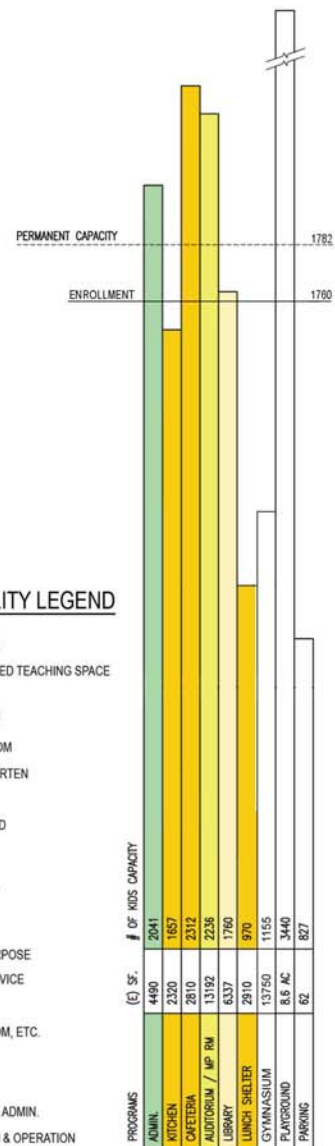


Principal:	Roy Sunada
Grade Levels:	6 th through 12 th Grade
Enrollment:	Current: 1,760
Current Capacity:	64 Permanent Classrooms 9 Modular Classrooms
Recent Projects:	Measure Y Phase 1 Scope Including Quick Start Projects Budget \$12.5M, Completed 2003
School Program:	<p>Marshall Fundamental Secondary School's goals are to "address the cognitive, social, emotional and physical developmental needs of each student."</p> <p>Highlights of the school's curriculum include:</p> <ul style="list-style-type: none">· Advanced Placement courses in Calculus, English, US History, Spanish , European History and Biology· Honors courses in : English, World History, US History, Government and Economics· G.A.T.E. Offerings: English , Language Arts, US History and World History· Computer Careers Academy: The Computer Careers Academy, serving grades 10 - 12 prepares students for college and careers in computers. <p>Marshall is one of only twelve schools in the United States to receive the College Board "Inspiration Award."</p>

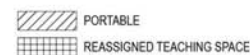
works



ENROLLMENT AND CAPACITY INFORMATION



SCHOOL FACILITY LEGEND



TEACHING SPACES

- 1 CLASSROOM
- 2 KINDERGARTEN
- 3 LAB
- 4 SHARED ED
- 5 PE

SHARED SUPPORT

- 6 LIBRARY
- 7 MULTI-PURPOSE
- 8 FOOD SERVICE
- 9 TOILET
- 10 WORKROOM, ETC.

CENTRAL ADMIN.

- 11 CENTRAL ADMIN.
- 12 MAINTAIN & OPERATION





SITE SIZE (ACRES): 16.60



AERIAL PHOTO

MODERNIZATION

- 1 AUDITORIUM
- 2 CAFETERIA / KITCHEN / LUNCH SHELTER

NEW CONSTRUCTION/ RECONSTRUCTION

NONE

SITE DEVELOPMENT

- 3 RESURFACE PLAYGROUND & BUILD NEW TENNIS COURT
- 4 BLEACHERS / LIGHTING

SCHOOL: **MARSHALL FS** IMMEDIATE NEEDS:

- A. MODERNIZE CAFETERIA, KITCHEN, LUNCH SHELTER, AUDITORIUM AND GYM/LOCKER RMS. TO CURRENT ELECTRICAL, MECHANICAL, LIGHTING, TECHNOLOGICAL, AND INTERIOR FINISH STANDARDS.
- B. SEPARATE DOMESTIC, FIRE AND IRRIGATION METERS.
- C. REPLACE OLD ELECTRIC PANELBOARDS AND LIGHTING AT THE BASEMENT OF BUILDING 'A' WITH ADEQUATE BRANCH BREAKER WITH INCREASED CAPACITY AND WATER HEATERS AT THE CLASSROOM BUILDING, GYM AND CAFETERIA. REPLACE OLD WIRING SYSTEM THROUGHOUT CAMPUS.
- D. PROVIDE ACCESSIBLE PATHS AND RAMPS TO THE MAIN CLASSROOM BUILDING AND PLAYFIELDS FROM STREET.
- E. REPAIR OR REPLACE BELL, PHONE, AND CLOCK SYSTEMS.

Pasadena High School

2925 East Sierra Madre Boulevard, Pasadena, CA 91107



Principal:	Dr. Derick Evans
Year Built:	1960
Grade Levels:	9 th through 12 th Grade
Enrollment:	Current: 2,645
Current Capacity:	86 Permanent Classrooms 3 Modular Classrooms
Recent Projects:	Measure Y Phase 1 Scope Including Quick Start Projects Budget \$24.8M, Completed 2004
School Program:	<p>The Pasadena High School vision “focuses on the students and their future. It incorporates the three holistic learning outcomes of academic foundation, quality citizenship, and productive work life.”</p> <p>Special programs offered at the high school include the Graphic Communications Academy (GCA), the Visual Arts and Design Academy (VADA), which is linked with the internationally famous Art Center College of Design, Pasadena City College and the Pasadena Art Armory.</p>

gkworks



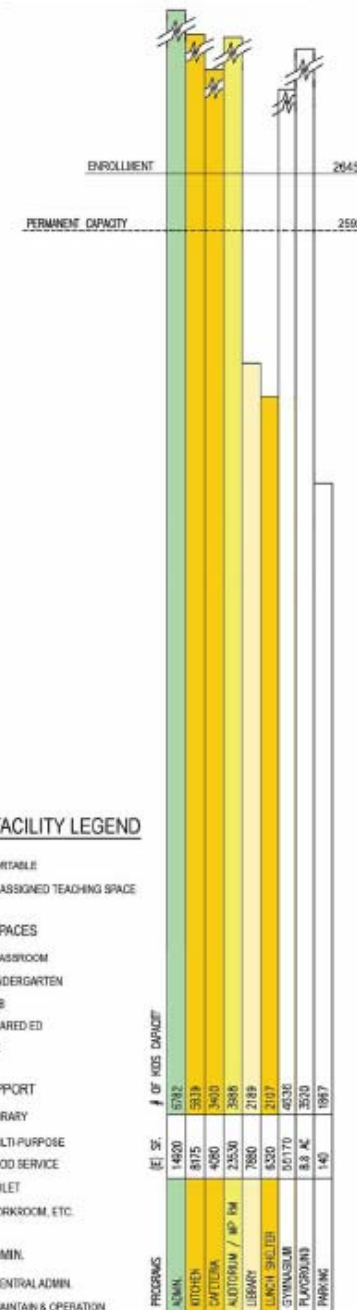
SITE SIZE (ACRES) : 56.00



SCHOOL FACILITY LEGEND

- PORTABLE
- REASSIGNED TEACHING SPACE
- TEACHING SPACES
 - 1 CLASSROOM
 - 2 KINDERGARTEN
 - 3 LAB
 - 4 SHARED ED
 - 5 PE
- SHARED SUPPORT
 - 6 LIBRARY
 - 7 MULTI-PURPOSE
 - 8 FOOD SERVICE
 - 9 TOILET
 - 10 WORKROOM, ETC.
- CENTRAL ADMIN.
 - 11 CENTRAL ADMIN.
 - 12 MAINTAIN & OPERATION

ENROLLMENT AND CAPACITY INFORMATION



gkkworks

PASADENA HIGH SCHOOL
2925 East Sierra Madre Boulevard, Pasadena, CA 91107
EXISTING SITE PLAN



PUSD
Pasadena Unified School District



SITE SIZE (ACRES): 56.00



AERIAL PHOTO



MODERNIZATION

- 1 AUDITORIUM
- 2 LOCKER ROOMS

NEW CONSTRUCTION/

NONE

SITE DEVELOPMENT

- 3 NEW VISITOR PARKING
- 4 NEW ENTRY COURT
- 5 NEW ARTIFICIAL TURF

SCHOOL: **PASADENA HS** IMMEDIATE NEEDS:

- A. MODERNIZE GYM TO INCLUDE CENTRAL HVAC, NEW LOCKER ROOM FEATURES; NEW BLEACHERS; REMOVE ASBESTOS FROM GYM COACH OFFICES' FLOORS AND PROVIDE INTERNET CONNECTIONS TO SAME OFFICES.
- B. UPGRADE RESTROOMS THROUGHOUT CAMPUS.
- C. PROVIDE A SECURITY ALARM SYSTEM.
- D. PROVIDE NEW SHADE STRUCTURES AT MAIN QUAD AND WHERE NEEDED.
- E. PROVIDE OUTDOOR SECURITY LIGHTING, PERHAPS WITH MOTION DETECTORS.
- F. PROVIDE A MULTI-PURPOSE ARTIFICIAL FIELD AND TRACK.
- G. PROVIDE PROPER DRAINAGE AT SOFTBALL AND SOCCER FIELDS AND REPAIR AND/OR REPLACE SECURITY FENCING. .

- H. ADA ISSUES: PROVIDE LANDING AT CLASSROOMS WITH RAISED FLOORS. PROVIDE ACCESS PATH TO ATHLETIC FIELDS. PROVIDE ACCESSIBLE RESTROOMS AT THE GYM/LOCKER ROOM. PROVIDE EXTERIOR DRINKING FOUNTAINS AND ACCESSIBLE FEATURES AT POOL AND POOL DECK.
- I. UPGRADE SANITARY SEWERS AT BUILDINGS 'A', 'E', 'J', 'S', 'T' AND 'W'.
- J. REPLACE OLD ELECTRIC PANELBOARDS AT BUILDINGS 'A', 'B', 'T' AND 'W' WITH ADEQUATE BRANCH BREAKERS WITH INCREASED CAPACITY.
- K. SEPARATE DOMESTIC/FIRE/IRRIGATION METERS.
- L. CREATE TEACHERS' LOUNGE.
- M. REPLACE INTERIOR LIGHTING WITH HIGH-EFFICIENCY LIGHTING IN BUILDING 'B', 'R', 'S' AND 'T'. REPLACE LIGHTING SYSTEM IN THE LITTLE THEATER.

Preliminary Revenue Assumptions

	Millions \$
General Obligation Bond	350.0
Developer Fees and Other Capital Funds	15.0
Williams Settlement Funding	15.0
Deferred Maintenance	15.0
State Modernization and Other Grants	20.0
State Joint Use and Partnership Grants	6.0
Joint Use/Partnership Grants –Athletic Fields (50%)	4.0
State Funding - seismic	10.0
Career Technical Matches – CTE (50%)	15.0
Asset Sales Account	15.0
Total Estimated Funds Available	465.0

The *Current* Project List

- Each site has a project list, which will be displayed in alphabetical order; the current list will be posted to the District website at the following link:

<http://www.pusd.us/staticpages/index.php?page=20080404104930191>

- In addition, the draft five year Deferred Maintenance Plan will be provided tonight to show projects by site, which will be funded with Deferred Maintenance funding, and are not part of this list

Ongoing Accountability and Transparency

- Since the last bond, a new law requires the District to establish an Independent Citizens Oversight Commission to scrutinize how the bond funds are being allocated and spent. The Oversight Committee must include, at a minimum: one person from the business community, one person from a taxpayers' organization, one person from a senior citizens' organization, one parent, and one member of the PTA or school site council; it may not include any District employees. The Oversight Committee would meet quarterly and publish an annual report to the school board and community
- The District is evaluating and will adopt a proven project tracking system to financially track and manage all of the projects. This will alert the District before projects go over budget so that the necessary corrections can be made
- The Facilities Master plan will be complete and no significant projects will be initiated after bond passage until a complete Facilities organization is in place and functioning
- The School Board and Oversight Committee will personally tour completed projects
- The District will establish a public website that tracks the projects completed on a school by school basis
- These monitoring and accountability measures will allow the District to know exactly where it is at vis-à-vis where it should be, and allow it to make changes if the District's needs or priorities should suddenly change
- The Facilities Master Plan will be updated quarterly in summary and annually in detail, and will be a true "living" document
- All Facilities Master Plan public documents are posted to the PUSD website

Next Steps

- **Finalize Prioritization - September 15, 2008**
- **Complete Plan - September 26, 2008**
- **Present Plan to Board - October 7, 2008**



Pasadena Unified School District Facilities Master Plan Community Presentations



Questions & Answers